

Rosefield Solar Farm

Appendices C1 - C5: Phase Two
Consultation and targeted consultation



Table of Contents

Appendix C-1 - List of prescribed consultees consulted under section 42(1)(a) and (b) during Phase Two Consultation

Appendix C-2 - Section 46 notification

Appendix C-3 - Copies of Section 48 advertising and availability on Rosefield Solar Farm website

Appendix C-4 - Community Update newsletter (published 20 May 2025)

Appendix C-5 - List of prescribed consultees consulted under section 42(1)(a) and (b) during targeted consultation

Appendix C-5.1 - List of prescribed consultees under section 42(1)(a) and (b) during targeted consultation on the proposed additional land

Appendix C-5.2 - List of prescribed consultees under section 42(1)(a) and (b) during targeted consultation on the proposed layout changes

Appendix C-1 - List of prescribed consultees consulted under section 42(1)(a) and (b) during Phase Two Consultation



List of prescribed consultees consulted under section 42(1)(a) and (b) during Phase Two Consultation

Table E-1: List of prescribed consultees under section 42 (1)(a) and (b) of the PA 2008

Organisation	Main consultees
Government	
The Secretary of State for Defence	Secretary of State for Defence
The relevant parish council	
Middle Claydon Parish Council	The Clerk
East Claydon Parish Council	The Clerk
Steeple Claydon Parish Council	The Clerk
Quainton Parish Council	The Clerk
Hogshaw Parish Council	The Clerk
Winslow Town Council	The Clerk
Hillesden Parish Council	The Clerk
Waddesdon Parish Council	The Clerk
Pitchcott Parish Council	The Clerk
Little Horwood Parish Council	The Clerk
Addington Parish Council	The Clerk
Great Horwood Parish Council	The Clerk
Preston Bissett Parish Council	The Clerk
Twyford Parish Council	The Clerk
Charndon Parish Council	The Clerk
Woodham Parish Council	The Clerk
Westcott Parish Council	The Clerk

North Martson Parish Council	The Clerk
Swanbourne Parish Council	The Clerk
Padbury Parish Council	The Clerk
Grendon Underwood Parish Council	The Clerk
Calvert Green Parish Council	The Clerk
Marsh Gibbon Parish Council	The Clerk
Granborough Parish Council	The Clerk
Environment	
Environment Agency	<ul style="list-style-type: none"> • Chief Executive • Case officers
Natural England	<ul style="list-style-type: none"> • Chief Executive • Case officer
Forestry Commission	<ul style="list-style-type: none"> • Chief Executive • Case officer
Historic England	<ul style="list-style-type: none"> • Director of Regions • Case officer
Wildlife Trust	<ul style="list-style-type: none"> • Chief Executive
The relevant Internal Drainage Board	
Buckingham & River Ouzel IDB	Board Chair
Bedfordshire & River Idel IDB	Board Chair
The Canal and River Trust	
Relevant AONB	
Chiltern AONB	Chair
North Wessex Downs AONB	Chair

Surrey Hills National Landscape AONB	Chief Executive
--------------------------------------	-----------------

Cotswolds Conservation Board	Chair
------------------------------	-------

Transport

The relevant highways authority

Buckinghamshire Council Parking, Roads and Transport Department	Corporate Director Planning, Growth and Sustainability
---	---

Hertfordshire County Highways	Chairman of Highways and Transport
-------------------------------	------------------------------------

Central Bedfordshire Highways	Head of Highways
-------------------------------	------------------

Milton Keynes Council Highways	Director of Highways
-----------------------------------	----------------------

West Northamptonshire Council Highways	Associate Director, Highways and Transport
---	--

Oxfordshire County Council Highways	Director of Environment and Highways
--	--------------------------------------

Royal Borough of Windsor and Maidenhead Highways	Executive Director of Place
---	-----------------------------

Slough Council Highways	Director of Environment and Highways
-------------------------	--------------------------------------

Wokingham Council Highways	Director of Place and Growth
----------------------------	------------------------------

National Highways	Chief Executive
-------------------	-----------------

The Secretary of State for Transport	Secretary of State for Transport
---	----------------------------------

The Civil Aviation Authority	Chief Executive
-------------------------------------	-----------------

NATS En-Route Safeguarding	The Secretary
---------------------------------------	---------------

Network Rail	The Secretary
---------------------	---------------

National Highways Historical Railways Estate	The Secretary
---	---------------

Health

Health and Safety Executive	Chief Executive
United Kingdom Health Security Agency	Chief Executive
NHS England	Chief Executive
NHS Buckinghamshire CCG	Chair
NHS Business Services Authority	The Secretary
NHS Trust Development Authority	Chief Executive
Buckinghamshire Healthcare NHS Trust	Chief Executive
NHS Blood and Transplant	The Secretary
NHS Litigation Authority (known operationally as NHS Resolution)	The Secretary
NHS Counter Fraud Authority	The Secretary
NHS South Central Ambulance Service	Chief Executive
Other	
Relevant statutory undertakers	
Anglian Water	The Secretary
Cambridge Water	The Secretary
Northumbrian Water (including Essex & Suffolk)	The Secretary
South Staffordshire Water	The Secretary
Yorkshire Water	The Secretary
Thames Water	The Secretary
Cholderton & District Water	The Secretary

Bristol Water	The Secretary
Severn Trent	The Secretary
Affinity Water	The Secretary
South East Water	The Secretary
Cadent Gas Limited	The Secretary
Northern Gas Networks Limited	The Secretary
Southern Gas Networks Plc	The Secretary
Energy Assets Pipelines Limited	The Secretary
ES Pipelines Ltd	The Secretary
Fulcrum Pipelines Limited	The Secretary
GTC Pipelines Limited	The Secretary
Harlaxton Gas Networks Limited	The Secretary
Independent Pipelines Limited	The Secretary
Indigo Pipelines Limited	The Secretary
Last Mile Gas Ltd	The Secretary
Leep Gas Networks Limited	The Secretary
Mua Gas Limited	The Secretary
Quadrant Pipelines Limited	The Secretary
Squire Energy Limited	The Secretary
National Gas	The Secretary
National Grid Electricity Distribution Limited	The Secretary
Eclipse Power Network Limited	The Secretary

Energy Assets Networks Limited	The Secretary
ESP Electricity Limited	The Secretary
Fulcrum Electricity Assets Limited	The Secretary
Harlaxton Energy Networks Limited	The Secretary
Independent Power Networks Limited	The Secretary
Indigo Power Limited	The Secretary
Last Mile Electricity Ltd	The Secretary
Leep Electricity Networks Limited	The Secretary
Mua Electricity Limited	The Secretary
Optimal Power Networks Limited	The Secretary
Squire Energy Metering Ltd	The Secretary
The Electricity Network Company Limited	The Secretary
UK Power Distribution Limited	The Secretary
Utility Assets Limited	The Secretary
Vattenfall Networks Limited	The Secretary
National Grid Electricity Transmission Plc	The Secretary
National Grid	The Secretary
National Grid Electricity System Operation Limited	The Secretary
Ofgem	Chief Executive
E.ON UK PLC	The Secretary

Vodafone	The Secretary
Lumen Technologies UK Limited	The Secretary
Openreach Limited	The Secretary
Exolum Pipeline System Ltd	The Secretary
EUNetworks Fiber UK Limited	The Secretary
Northern Powergrid (Yorkshire) PLC	The Secretary
Clean Electricity Limited	The Secretary
On Tower UK Limited	The Secretary
The Coal Authority	Chief Executive
The Crown Estate Commissioners	Chief Executive
Thames Valley Resilience Forum	Secretary
Homes England	Chief Executive
Royal Mail	The Secretary
The relevant police authority	
Thames Valley Police	Chief Constable
Metropolitan Police	Chief Constable
Hertfordshire Constabulary	Chief Constable
Surrey Police	Chief Constable
Hampshire Constabulary	Chief Constable
Wiltshire Police	Chief Constable
Gloucestershire Constabulary	Chief Constable
Warwickshire Police	Chief Constable
Northamptonshire Police	Chief Constable

Bedfordshire Police	Chief Constable
Thames Valley Police and Crime Commissioner	Chief Executive
London Police and Crime Commissioner	Chief Executive
Hertfordshire Police and Crime Commissioner	Chief Executive
Bedfordshire Police and Crime Commissioner	Chief Executive
Northamptonshire Police and Crime Commissioner	Chief Executive
Warwickshire Police and Crime Commissioner	Chief Executive
Gloucestershire Police and Crime Commissioner	Chief Executive
Wiltshire Police and Crime Commissioner	Chief of Corporate Services
Hampshire Police and Crime Commissioner	Chief Executive
Surrey Police and Crime Commissioner	Chief Executive
The relevant ambulance service	
NHS South Central Ambulance Service	Chief Executive
NHS South East Coast Ambulance Service	Chief Executive
NHS London Ambulance Service	Chief Executive
NHS East of England Ambulance Service	Chief Executive
East Midlands Ambulance Service Trust	Chief Executive

NHS West Midlands Ambulance Service	Chief Executive
NHS South Western Ambulance Service	Chief Executive
The relevant fire and rescue authority	
Buckinghamshire & Milton Keynes Fire and Rescue Service	Fire Engineering Design Technician & Primary Authority Manager
Royal Berkshire Fire and Rescue Service	Chief Fire Officer
Oxfordshire Fire and Rescue Service	Chief Fire Officer
Northamptonshire Fire and Rescue Service	Chief Fire Officer
Bedfordshire Fire and Rescue Service	Chief Fire Officer
Hertfordshire Fire and Rescue Service	Chief Fire Officer
London Fire and Emergency Planning Authority	Chief Fire Officer
The relevant Integrated Care Board	
NHS Buckinghamshire, Oxfordshire and Berkshire West Integrated Care Board	Chief Executive
North West London Integrated Care System	Chief Executive
Hertfordshire and West Essex Integrated Care System	Chief Executive
Bedfordshire, Luton and Milton Keynes Integrated Care Board	Chief Executive

Northamptonshire Integrated Care Board	The Secretary
--	---------------

Coventry and Warwickshire Integrated Care Board	The Secretary
---	---------------

One Gloucestershire	Chief Executive
---------------------	-----------------

Bath and North East Somerset, Swindon and Wiltshire Together	Chief Executive
--	-----------------

Hampshire and Isle of Wight Integrated Care Board	Chief Executive
---	-----------------

Frimley Health and Care	The Secretary
-------------------------	---------------

Local authorities

Host authority (B and C authorities within s43 of the PA 2008)

Buckinghamshire Council	Leader Chief Executive Corporate Director, Planning, Growth & Sustainability Major Development Manager (Acting)
-------------------------	---

Neighbouring local authorities (A and D authorities within s43 of the PA 2008)

Cherwell District Council	<ul style="list-style-type: none"> • Leader of the Council • Chief Executive
---------------------------	--

Dacorum Borough Council	<ul style="list-style-type: none"> • Leader of the Council • Chief Executive
-------------------------	--

London Borough of Hillingdon	<ul style="list-style-type: none"> • Leader of the Council • Chief Executive
------------------------------	--

Three Rivers District Council	<ul style="list-style-type: none"> • Leader of the Council • Chief Executive
-------------------------------	--

South Oxfordshire District Council	<ul style="list-style-type: none"> • Leader of the Council • Chief Executive
------------------------------------	--

Central Bedfordshire Council	<ul style="list-style-type: none"> • Leader of the Council • Chief Executive
------------------------------	--

- | | |
|------------------------------|---|
| Hertfordshire County Council | <ul style="list-style-type: none">• Leader of the Council• Chief Executive |
|------------------------------|---|

- | | |
|--------------------------|---|
| Greater London Authority | <ul style="list-style-type: none">• Leader of the Council• Chief Executive |
|--------------------------|---|

- | | |
|-----------------------|---|
| Milton Keynes Council | <ul style="list-style-type: none">• Leader of the Council• Chief Executive |
|-----------------------|---|

- | | |
|----------------------------|---|
| Oxfordshire County Council | <ul style="list-style-type: none">• Leader of the Council• Chief Executive |
|----------------------------|---|

- | | |
|---|---|
| Royal Borough of Windsor and Maidenhead | <ul style="list-style-type: none">• Leader of the Council• Chief Executive |
|---|---|

- | | |
|----------------|---|
| Slough Council | <ul style="list-style-type: none">• Leader of the Council• Chief Executive |
|----------------|---|

- | | |
|-------------------------------|---|
| West Northamptonshire Council | <ul style="list-style-type: none">• Leader of the Council• Chief Executive |
|-------------------------------|---|

- | | |
|-------------------|---|
| Wokingham Council | <ul style="list-style-type: none">• Leader of the Council• Chief Executive |
|-------------------|---|

Appendix C-2 - Section 46 notification



[REDACTED]
[REDACTED]
[REDACTED]
[REDACTED]
[REDACTED]
[REDACTED]

16th September 2024

[REDACTED]

Rosefield Solar Farm – section 46 notification under Planning Act 2008

The Secretary of State is hereby notified in accordance with section 46 of the Planning Act 2008 (the “Act”), of our¹ intention to submit a Development Consent Order (“DCO”) application to the Secretary of State for Energy Security and Net Zero to authorise the construction, operation and decommissioning of the proposed Rosefield Solar Farm (the “Proposed Development”). We intend to make this application in Q2 2025.

We have previously provided notification pursuant to Regulation 8(1)(b) of the Infrastructure Planning (Environmental Impact Assessment) Regulations 2017 that the Proposed Development is an Environmental Impact Assessment development (“EIA development”), as defined by those regulations and as such, an Environmental Statement will be submitted as part of the DCO application.

The submission of the application will follow a period of statutory pre-application consultation carried out pursuant to section 42, section 47 and section 48 of the Act, the Infrastructure Planning (Applications: Prescribed Forms and Procedures) Regulations 2009 (the “APFP Regulations”), and the Infrastructure Planning (Environmental Impact Assessment) Regulations 2017. The consultation will commence on Wednesday 18 September 2024 and all feedback must be provided by the close of consultation at 11.59pm on Thursday 14 November 2024.

Summary of the Proposed Development

The application is for the proposed Rosefield Solar Farm at land south of Buckingham close to the settlements of Steeple Claydon, East Claydon, Middle Claydon, Botolph Claydon and Calvert (“the Site”) and within the administrative boundary of Buckinghamshire Council. The Proposed Development would cover an area of approximately 771 hectares.

The DCO would authorise:

- construction, operation (including maintenance) and decommissioning of ground mounted solar PV arrays, Balance of Solar System, Collector Compounds and Battery Energy Storage System, along with distribution cables.

¹ Rosefield Energyfarm Limited (company No. 11618221), whose registered office is at Alexander House 1 Mandarin Road, Rainton Bridge Business Park, Houghton Le Spring, Sunderland, England, DH4 5RA (referred to in this document as Rosefield).

- other associated and ancillary works including a new substation, known as Rosefield Substation, which would be connected to the PV arrays and battery storage via distribution cables. Underground cabling would connect the Rosefield Substation to the point of connection into the National Electricity Transmission System via a 400kV grid connection cable route.
- other infrastructure works including on-site cabling, ancillary buildings such as offices and welfare areas, access tracks, and any other works identified as necessary to enable the Proposed Development. There would also be parts of the Site used for landscaping which would include features such as biodiversity mitigation and enhancement measures, amenity improvements and fencing.
- the compulsory acquisition of land and/or rights and the taking of temporary possession of land.
- offsite highway works (if required).
- the overriding of easements and other rights over or affecting land.
- the application and/or disapplication of legislation relating to the Proposed Development.
- such ancillary, incidental and consequential provisions, licences, property rights, permits and consents as are necessary and/or convenient.

Consultation documents

Please find enclosed the information that is being sent to the section 42 consultees:

- A covering letter sent to consultees identified pursuant to section 42(1)(a) and section 42(1)(b), a cover letter sent to categories 1 and 2 consultees pursuant to section 42(1)(d), and a cover letter sent to category 3 consultees pursuant to section 42(1)(d), which includes a copy of the plan showing the site boundary of the Proposed Development.
- Notice of the proposed application which has been publicised in accordance with section 48 of the Act and the requirements set out in Regulation 4 of the APFP Regulations.

Information about the Proposed Development comprising a consultation booklet and the Preliminary Environmental Information Report ("PEIR"), including a non-technical summary will be available free of charge online at : <https://rosefieldsolarfarm.co.uk/document-library/> and to view at deposit points in the local area from the start of the consultation period on 18 September 2024.

A USB device containing the consultation documents can also be provided free of charge upon request. If, however, the Secretary of State requires the material in an alternative format, please do not hesitate to contact us.

In addition to these documents, there will be information on the project website, <https://rosefieldsolarfarm.co.uk/> and through a virtual public exhibition accessible by the same link. There will also be a series of public events held in the area around the Site to enable anyone to find out more about the Proposed Development and share their views. Further details of the consultation arrangements can be found in the section 48 notice.

Should you have any queries, please do not hesitate to contact me on info@rosefieldsolarfarm.co.uk or 0800 8611097 (Monday to Friday, 9am-5:30pm).

Yours sincerely,



EDF Renewables UK

18 September 2024

Dear Sir or Madam,

Rosefield Solar Farm

Statutory pre-application consultation: 18 September 2024 to 14 November 2024

Section 42 of the Planning Act 2008: Duty to consult on a proposed application

Overview

I am writing regarding our¹ intention to submit a Development Consent Order ('DCO') application to the Secretary of State for Energy Security and Net Zero under section 37 of the Planning Act 2008 ('the Act') for the construction, operation and decommissioning of Rosefield Solar Farm.

We have now commenced statutory pre-application consultation in relation to Rosefield Solar Farm, and I am writing to you because you have been identified as a prescribed consultee under section 42(1)(b) of the Act.

This letter explains how to take part in the public consultation and how you can share your views on our proposals. The statutory consultation will run from Thursday 18 September to Thursday 14 November 2024 and we welcome your feedback at this stage.

Rosefield Solar Farm

Rosefield Solar Farm is a proposed new solar farm with battery storage located in Buckinghamshire. It would provide enough clean energy to power more than 57,000 homes².

The planning process

As Rosefield Solar Farm would generate in excess of 50MW of electrical capacity, it is classed as a Nationally Significant Infrastructure Project under the Act. This means that we must apply to the Secretary of State for a DCO under the Act.

More information and guidance on the pre-application process and the Act can be found on the Planning Inspectorate's website: <https://www.gov.uk/government/collections/national-infrastructure-planning-guidance-portal>.

How you can find out more

There are a range of ways that you can find out more about our proposals, including:

- **Visiting our website to view our consultation materials.** Copies of our consultation documents – including our Statement of Community Consultation (SoCC) and Preliminary Environmental Information Report (PEIR) – are now available to view and download free of charge on the project website at the following link: www.rosefieldsolarfarm.co.uk.
- **Attending our public exhibition events** (see our website or the attached section 48 notice for details).
- **Requesting a USB of our consultation materials** – Including the SoCC and PEIR – free of charge.
- **Requesting printed copies** of our consultation booklet, questionnaire and SoCC free of charge. Requests for hard copies of the PEIR will be reviewed on a case-by-case basis.

¹ Rosefield Energyfarm Limited (company No. 11618221), whose registered office is at Alexander House 1 Mandarin Road, Rainton Bridge Business Park, Houghton Le Spring, Sunderland, England, DH4 5RA (referred to in this document as Rosefield).

² Based upon the average domestic electricity consumption per home (temperature corrected) per the Energy Consumption in the UK (published September 2021, Table C9 of ECUK: Consumption data tables).

How you can share your views

If you wish to submit a consultation response, you must do so in writing by the consultation deadline of 11:59pm on Thursday 14 November 2024. You can provide feedback in the following ways:

- Submitting comments by email or in writing to our Freepost address.
- Completing a questionnaire online (www.rosefieldsolarfarm.co.uk) or returning it via the email or Freepost.

Should you have any questions, wish to discuss the proposals further or to request copies of the consultation documents, please do get in touch by:

- Calling 0800 8611097 (9:00am to 5:30pm, Monday to Friday).
- Emailing info@rosefieldsolarfarm.co.uk.
- Writing to the team at Rosefield Solar Farm FREEPOST SEC Newgate UK Local.


Enclosed with this letter is a copy of the section 48 notice published under the Act.

Next steps

Following this consultation, we will consider all the feedback we receive and continue refining our proposals for Rosefield Solar Farm before submitting a DCO application to the Planning Inspectorate, which we intend to do in Q2 2025. The DCO application will include a Consultation Report, which will set out how we have consulted on Rosefield Solar Farm, summarise the responses received and explain how we have given regard to them.

We look forward to receiving your feedback.

Yours sincerely,



EDF Renewables UK

Enc. Section 48 Notice

Address 1

Address 2

Address 3

18 September 2024

Dear Sir or Madam,

Rosefield Solar Farm

Statutory pre-application consultation: 18 September 2024 to 14 November 2024

Section 42 of the Planning Act 2008: Duty to consult on a proposed application

Overview

I am writing regarding our¹ intention to submit a Development Consent Order ('DCO') application to the Secretary of State for Energy Security and Net Zero under section 37 of the Planning Act 2008 ('the Act') for the construction, operation and decommissioning of Rosefield Solar Farm.

We have now commenced statutory pre-application consultation in relation to Rosefield Solar Farm, and I am writing to you because you have been identified as a prescribed consultee under section 42(1)(a) of the Act.

The statutory consultation will run from Wednesday 18 September to Thursday 14 November 2024 and we welcome your feedback at this stage.

This letter explains how to take part in the public consultation and how you can share your views on our proposals. Enclosed with this letter is a USB containing the consultation materials, including the Preliminary Environmental Information Report (PEIR), and a copy of the section 48 notice published under the Act.

We will be holding a preview of our public exhibitions for local elected representatives on Thursday 3 October (1pm-2pm) at Calvert Green Village Hall and Brickworx Bar, Cotswolds Way, Calvert MK18 2FJ. We would like to invite you to this session to meet the project team and ask questions, ahead of the public opening later that afternoon.

If you are unable to attend this preview session, please do get in touch so we can arrange a time to brief you on our updated proposals.

Rosefield Solar Farm

Rosefield Solar Farm is a proposed new solar farm with battery storage located in Buckinghamshire. It would provide enough clean energy to power more than 57,000 homes².

The planning process

As Rosefield Solar Farm would generate in excess of 50MW of electrical capacity, it is classed as a Nationally Significant Infrastructure Project under the Act. This means that we must apply to the Secretary of State for a DCO under the Act.

More information and guidance on the pre-application process and the Act can be found on the Planning Inspectorate's website: <https://www.gov.uk/government/collections/national-infrastructure-planning-guidance-portal>.

¹ Rosefield Energyfarm Limited (company No. 11618221), whose registered office is at Alexander House 1 Mandarin Road, Rainton Bridge Business Park, Houghton Le Spring, Sunderland, England, DH4 5RA (referred to in this document as Rosefield).

² Based upon the average domestic electricity consumption per home (temperature corrected) per the Energy Consumption in the UK (published September 2021, Table C9 of ECUK: Consumption data tables).

How you can find out more

There are a range of ways that you can find out more about our proposals, including:

- **Reading our consultation materials**, which can be downloaded from the USB enclosed with this letter or on our website: www.rosefieldsolarfarm.co.uk.
- **Viewing our consultation materials at a local venue**: East and Botolph Claydon Village Hall and Winslow Community Library. Please check opening times before travelling.
- **Attending our public exhibition events** where our team will be on hand to answer your questions (for details of these events please visit our website or view the section 48 notice saved on the enclosed USB).
- **Requesting a USB of our consultation materials** – Including the SoCC and PEIR – free of charge.
- **Requesting printed copies** of our consultation booklet, questionnaire and SoCC free of charge. Requests for hard copies of the PEIR will be reviewed on a case-by-case basis. Please refer to the section 48 notice saved on the enclosed USB.

How you can share your views

If you wish to submit a consultation response, you must do so in writing by the consultation deadline of 11:59pm on Thursday 14 November 2024. You can provide feedback in the following ways:

- Submitting comments by email or in writing to our Freepost address.
- Completing a questionnaire online (www.rosefieldsolarfarm.co.uk) or returning it via the email or Freepost.

Contact the team

Should you have any questions, wish to discuss the proposals further or to request copies of the consultation documents, please do get in touch by:

- Calling 0800 8611097 (9:00am to 5:30pm, Monday to Friday).
- Emailing info@rosefieldsolarfarm.co.uk.
- Writing to the team at Rosefield Solar Farm FREEPOST SEC Newgate UK Local.

Next steps

Following this consultation, we will consider all the feedback we receive and continue refining our proposals for Rosefield Solar Farm before submitting a DCO application to the Planning Inspectorate, which we intend to do in Q2 2025. The DCO application will include a Consultation Report, which will set out how we have consulted on Rosefield Solar Farm, summarise the responses received and explain how we have given regard to them.

We look forward to receiving your feedback.

Yours sincerely,



EDF Renewables UK

Enc. USB containing consultation materials, PEIR and section 48 notice

Address 1

Address 2

Address 3

18 September 2024

Dear Sir or Madam,

Rosefield Solar Farm

Statutory pre-application consultation: 18 September 2024 to 14 November 2024

Section 42 of the Planning Act 2008: Duty to consult on a proposed application

Overview

I am writing regarding our¹ intention to submit a Development Consent Order ('DCO') application to the Secretary of State for Energy Security and Net Zero under section 37 of the Planning Act 2008 ('the Act') for the construction, operation and decommissioning of Rosefield Solar Farm.

We have now commenced statutory pre-application consultation in relation to Rosefield Solar Farm. I am writing to you because you have been identified as a relevant Local Authority statutory consultee under section 42(1)(b) and section 43 of the Act.

The statutory consultation will run from Wednesday 18 September to Thursday 14 November 2024 and we welcome your feedback at this stage. We would also appreciate the opportunity to brief you on our updated proposals at your earliest convenience. If you would like to organise a meeting, please contact our team using the contact details overleaf.

This letter explains how to take part in the public consultation and how you can share your views on our proposals. Enclosed with this letter is a USB containing the consultation materials, including the Preliminary Environmental Information Report (PEIR), and a copy of the section 48 notice published under the Act.

Rosefield Solar Farm

Rosefield Solar Farm is a proposed new solar farm with battery storage located in Buckinghamshire. It would provide enough clean energy to power more than 57,000 homes².

The planning process

As Rosefield Solar Farm would generate in excess of 50MW of electrical capacity, it is classed as a Nationally Significant Infrastructure Project under the Act. This means that we must apply to the Secretary of State for a DCO under the Act.

More guidance on the pre-application process and the Act can be found on the Planning Inspectorate's website: <https://www.gov.uk/government/collections/national-infrastructure-planning-guidance-portal>.

¹ Rosefield Energyfarm Limited (company No. 11618221), whose registered office is at Alexander House 1 Mandarin Road, Rainton Bridge Business Park, Houghton Le Spring, Sunderland, England, DH4 5RA (referred to in this document as Rosefield).
² Based upon the average domestic electricity consumption per home (temperature corrected) per the Energy Consumption in the UK (published September 2021, Table C9 of ECUK: Consumption data tables).

How you can find out more

There are a range of ways that you can find out more about our proposals, including:

- **Reading our consultation materials**, which can be downloaded from the USB enclosed with this letter or on our website: www.rosefieldsolarfarm.co.uk.
- **Viewing our consultation materials at a local venue**: East and Botolph Claydon Village Hall and Winslow Community Library. Please check opening times before travelling.
- **Attending our public exhibition events** where our team will be on hand to answer your questions (for details of these events please visit our website or view the section 48 notice saved on the enclosed USB).
- **Requesting a USB of our consultation materials** – Including the SoCC and PEIR – free of charge.
- **Requesting hard copies of our consultation materials**. For more information, please refer to the section 48 notice saved on the enclosed USB.

How you can share your views

If you wish to submit a consultation response, you must do so in writing by the consultation deadline of 11:59pm on Thursday 14 November 2024. You can provide your feedback in the following ways:

- Submitting comments by email or in writing to our Freepost address.
- Completing a questionnaire online (www.rosefieldsolarfarm.co.uk) or returning it via email or Freepost.

Contact the team

Should you have any questions, wish to discuss the proposals further or to request copies of the consultation documents, please do get in touch by:

- Calling 0800 8611097 (9:00am to 5:30pm, Monday to Friday).
- Emailing info@rosefieldsolarfarm.co.uk.
- Writing to the team at Rosefield Solar Farm FREEPOST SEC Newgate UK Local.

Next steps

Following this consultation, we will consider all the feedback we receive and continue refining our proposals for Rosefield Solar Farm before submitting a DCO application to the Planning Inspectorate, which we intend to do in Q2 2025. The DCO application will include a Consultation Report, which will set out how we have consulted on Rosefield Solar Farm, summarise the responses received and explain how we have given regard to them.

We look forward to receiving your feedback.

Yours sincerely,

A large black rectangular box redacting the signature of the sender.A small black rectangular box redacting the name of the sender.A black rectangular box redacting the first line of the sender's address.

EDF Renewables UK

Enc. USB containing our consultation materials, PEIR and section 48 notice

Address 1

Address 2

Address 3

18 September 2024

Dear Sir or Madam,

Rosefield Solar Farm

Statutory pre-application consultation: 18 September 2024 to 14 November 2024

Section 42 of the Planning Act 2008: Duty to consult on a proposed application

Overview

I am writing regarding our¹ intention to submit a Development Consent Order ('DCO') application to the Secretary of State for Energy Security and Net Zero under section 37 of the Planning Act 2008 ('the Act') for the construction, operation and decommissioning of Rosefield Solar Farm.

We have now commenced statutory pre-application consultation in relation to Rosefield Solar Farm. I am writing to you because you have been identified as a relevant Local Authority statutory consultee under section 42(1)(b) and section 43 of the Act. We invite you to submit your feedback on the proposals by 11:59pm on 14 November 2024.

This letter explains how to take part in the public consultation and how you can share your views on our proposals. Enclosed with this letter is a USB containing the consultation materials, including the Preliminary Environmental Information Report (PEIR), and a copy of the section 48 notice published under the Act.

Rosefield Solar Farm

Rosefield Solar Farm is a proposed new solar farm with battery storage located in Buckinghamshire. It would provide enough clean energy to power more than 57,000 homes².

The planning process

As Rosefield Solar Farm would generate in excess of 50MW of electrical capacity, it is classed as a Nationally Significant Infrastructure Project under the Act. This means that we must apply to the Secretary of State for a DCO under the Act.

More guidance on the pre-application process and the Act can be found on the Planning Inspectorate's website: <https://www.gov.uk/government/collections/national-infrastructure-planning-guidance-portal>.

How you can find out more

The statutory consultation will run from Wednesday 18 September to Thursday 14 November 2024, and we would welcome your feedback at this stage. There are a range of ways that you can find out more about our proposals and take part in the consultation, including:

- **Reading our consultation materials**, which can be downloaded from the USB enclosed with this letter or on our website: www.rosefieldsolarfarm.co.uk.

¹ Rosefield Energyfarm Limited (company No. 11618221), whose registered office is at Alexander House 1 Mandarin Road, Rainton Bridge Business Park, Houghton Le Spring, Sunderland, England, DH4 5RA (referred to in this document as Rosefield).

² Based upon the average domestic electricity consumption per home (temperature corrected) per the Energy Consumption in the UK (published September 2021, Table C9 of ECUK: Consumption data tables).

- **Attending our public exhibition events** where our team will be on hand to answer your questions (for details of these events please visit our website or view the section 48 notice saved on the enclosed USB).
- **Requesting hard copies of our consultation materials.** For more information, please refer to the section 48 notice saved on the enclosed USB.

How you can share your views

If you wish to submit a consultation response, you must do so in writing by the consultation deadline of 11:59pm on Thursday 14 November 2024. You can provide your feedback in the following ways:

- Submitting comments by email or in writing to our Freepost address.
- Completing a questionnaire online (www.rosefieldsolarfarm.co.uk) or returning it via email or Freepost.

Contact the team

Should you have any questions, wish to discuss the proposals further or to request hard copies of the consultation documents, please do get in touch by:

- Calling 0800 8611097 (9:00am to 5:30pm, Monday to Friday).
- Emailing info@rosefieldsolarfarm.co.uk.
- Writing to the team at Rosefield Solar Farm FREEPOST SEC Newgate UK Local.

Next steps

Following this consultation, we will consider all the feedback we receive and continue refining our proposals for Rosefield Solar Farm before submitting a DCO application to the Planning Inspectorate, which we intend to do in Q2 2025. The DCO application will include a Consultation Report, which will set out how we have consulted on Rosefield Solar Farm, summarise the responses received and explain how we have given regard to them.

We look forward to receiving your feedback.

Yours sincerely,



EDF Renewables UK

Enc. USB containing our consultation materials, PEIR and section 48 notice

Section 48 – Planning Act 2008 – Rosefield Solar Farm

Notice publicising a proposed application for a Development Consent Order

Regulation 4 Infrastructure Planning (Applications: Prescribed Forms and Procedure) Regulations 2009

Notice under Section 48 of the Planning Act is hereby given that Rosefield Energyfarm Limited (11618221) of Alexander House 1 Mandarin Road, Rainton Bridge Business Park, Houghton Le Spring, Sunderland, England, DH4 5RA (the "Applicant") proposes to make an application ("the Application") to the Secretary of State for Energy Security and Net Zero under Section 37 of the Planning Act 2008 for a Development Consent Order ('DCO'). The Applicant intends to make the Application in Q2 2025.

The Application is for the proposed Rosefield Solar Farm ("the Proposed Development") at land south of Buckingham, close to the settlements of Steeple Claydon, East Claydon, Middle Claydon, Botolph Claydon and Calvert ("the Site") within the administrative boundary of Buckinghamshire Council. The Rosefield Solar Farm would cover an area of approximately 771 hectares.

The DCO would authorise:

- construction, operation (including maintenance) and decommissioning of ground mounted solar PV arrays, Balance of Solar System, Collector Compounds and Battery Energy Storage System, along with distribution cables.
- other association and ancillary works including a new substation, known as Rosefield Substation, which would be connected to the PV arrays and battery storage via distribution cables. Underground cabling would connect to the Rosefield Substation to the point of connection into the National Electricity Transmission System via a 400kV grid connection cable route.
- other infrastructure works including on-site cabling, ancillary buildings such as offices and welfare areas, access tracks, and any other works identified as necessary to enable the Proposed Development. There would also be parts of the Site used for landscaping which would include features such as biodiversity mitigation and enhancement measures, amenity improvements and fencing.
- The compulsory acquisition of land and/or rights and the taking of temporary possession of land.
- Offsite highway works (if required).
- The overriding of easements and other rights over or affecting land.
- The application and/or disapplication of legislation relating to the Proposed Development.
- Such ancillary, incidental and consequential provisions, licences, property rights, permits and consents as are necessary and and/or convenient.

The Proposed Development is an Environmental Impact Assessment ('EIA') development and accordingly a Preliminary Environmental Information Report ('PEIR') has been produced and is included as part of the consultation materials. The PEIR sets out the preliminary environmental information on the Proposed Development. The Applicant is carrying out an EIA and will submit an Environmental Statement as part of its DCO application. The Applicant has produced a Statement of Community Consultation ('SoCC') in accordance with section 47 of the Planning Act 2008 which explains how the Applicant will consult with the local community and stakeholders about the Proposed Development. The SoCC can be

viewed free of charge at <https://rosefieldsolarfarm.co.uk/document-library/>, or at the deposit locations set out below. The consultation will be carried out in accordance with the SoCC.

Consultation on the proposals will take place from **18 September 2024 to 14 November 2024**. The Applicant will publish consultation materials including a consultation booklet showing the nature and location of the Proposed Development, a consultation questionnaire and the PEIR. These will be available online free of charge from 18 September 2024 to 14 November 2024 at <https://rosefieldsolarfarm.co.uk/document-library/> being a website maintained by or on behalf of the Applicant. Copies of the consultation materials will be available for inspection free of charge during the consultation period at locations listed below (Table 1), as well as on USB or in hard copy on request to the Applicant from 18 September 2024.

There are a number of ways to find out more about the Proposed Development including:

- Attending a public event which we will hold in locations around the Site at the following times and locations:
 - Calvert Green Village Hall and Brickworx Bar, **Thursday 3 October (2pm-6pm)**
 - East and Botolph Claydon Village Hall, **Friday 4 October (4pm-8pm)**
 - Quainton Memorial Hall, **Saturday 5 October (10am-2pm)**
 - Steeple Claydon Village Hall, **Friday 18 October (3.30pm-8pm)**
 - Quainton Memorial Hall, **Saturday 19 October (10am-2pm)**
- Viewing the virtual exhibition on the project website: <https://rosefieldsolarfarm.co.uk/>. The virtual exhibition will be accessible from 18 September 2024 to 14 November 2024.
- Reading the consultation booklet which will be available from 18 September 2024 online or in hard copy on request, at deposit points around the area (listed below) and at the public events.
- Reviewing the PEIR, which will be available from 18 September 2024, by going to <https://rosefieldsolarfarm.co.uk/document-library/> or visiting a deposit point.
- Getting in touch using the contact details below.

Table 1: Deposit points

Deposit location	Opening hours
East and Botolph Claydon Village Hall Botyl Road, Botolph Claydon MK18 2LR	Monday to Thursday 8am-11pm Friday to Saturday 8am-12am
Winslow Community Library Park Rd, Winslow MK18 3DN	Monday 9.30am – 5pm Wednesday 9.30am – 1pm Friday 1 – 5pm Saturday 9.30am – 1pm

**Please check opening times before travelling*

Copies of the consultation materials may be requested during the consultation period from the Applicant using the e-mail address, Freepost address or Freephone number provided below.

The Applicant will provide USBs containing all the consultation materials including the PEIR free of charge. Printed copies of the consultation booklet, SoCC and questionnaire will be available free of charge. Requests for printed copies of the PEIR will be reviewed on a case-by-case basis. A fee to cover printing costs (up to a maximum of £750 for one full set of

consultation documents) may be charged to the recipient. To request materials in an alternate format, please get in touch using the contact details below.

Any person may comment on the proposals or otherwise respond to this publicity. Responses must be received between 18 September 2024 to 14 November 2024 through any of the following ways:

- Completing the consultation questionnaire online at www.rosefieldsolarfarm.co.uk.
- Returning a questionnaire by Freepost (no stamp required) or submitting your comments to the following address: Rosefield Solar Farm, FREEPOST SEC Newgate UK LOCAL.
- Returning a questionnaire or submitting your comments by email: info@rosefieldsolarfarm.co.uk.

When providing your response, please include your name and address or, if you would prefer your comments to be anonymous, your postcode only. Please also confirm the nature of your interest in the Proposed Development.

Responses must be received no later than 11:59pm on Thursday 14 November 2024.

The Applicant will consider and have regard to all responses received by the above deadline when developing the Application for a DCO once consultation has closed. Responses will form the basis of a Consultation Report that will be one of the factors taken into consideration by the Secretary of State when deciding whether the Application can be accepted for Examination. Therefore, in providing any comment, it should be borne in mind that the substance of it may be communicated to others as part of the Consultation Report.

If you would like further information about this notice, the consultation or the Proposed Development, please contact the project team by using one of the contact methods provided below:

- By Freephone: 0800 8611097
 - By email: info@rosefieldsolarfarm.co.uk
 - By Freepost: Rosefield Solar Farm, FREEPOST SEC Newgate UK LOCAL
-



Customer Services: [REDACTED]

e-mail: [REDACTED]

The Applicant

By email only

Our Ref: EN010158

Date: 18 September 2024

Dear [REDACTED],

Planning Act 2008 (as amended) – Section 46 and The Infrastructure Planning (Environmental Impact Assessment) Regulations 2017 – Regulation 8

Proposed application by Rosefield Energy Farm Limited for an Order Granting Development Consent for the Rosefield Solar Farm Project

Acknowledgement of receipt of information concerning proposed application

Thank you for your letter of 16 September 2024 and the following documentation:

- Covering letters for parties under section 42 of the Planning Act 2008
- A copy of the Section 48 Notice

We acknowledge further consultation documents have been supplied via the website [Document library – Rosefield Solar Farm](#). These include:

- The Preliminary Environmental Information Report (PEIR)
- A non-technical summary of the PEIR
- Additional documents including the Consultation booklet, Consultation newsletter, Questionnaire. Map with grid references for feedback and Statement of Community Consultation (SoCC).

We acknowledge that you have notified the Planning Inspectorate of the proposed application for an Order granting development consent for the purposes of section 46 of the Planning Act 2008 and supplied the information for consultation under section 42. The following reference number has been given to the proposed application, which I would be grateful if you would use in subsequent communications:

EN010158

We also acknowledge notification in accordance with Regulation 8(1)(b) of the Infrastructure Planning (Environmental Impact Assessment) Regulations 2017 that you propose to provide an environmental statement in respect of the Proposed Development.

If you have any further queries, please do not hesitate to contact me.

Yours sincerely

[Redacted Signature]

[Redacted Name]

Case Manager

This decision was made by officials on behalf of the Secretary of State under delegated powers.

This communication does not constitute legal advice.

Please view our [Privacy Notice](#) before sending information to the Planning Inspectorate.

**Appendix C-3 -
Copies of section
48 advertising and
availability on
Rosefield Solar
Farm website**



Since 1832

The Bucks Herald

Get Bucks news to your inbox, visit [\[redacted\]](#)

Wednesday, September 11, 2024

£1.60

FREE



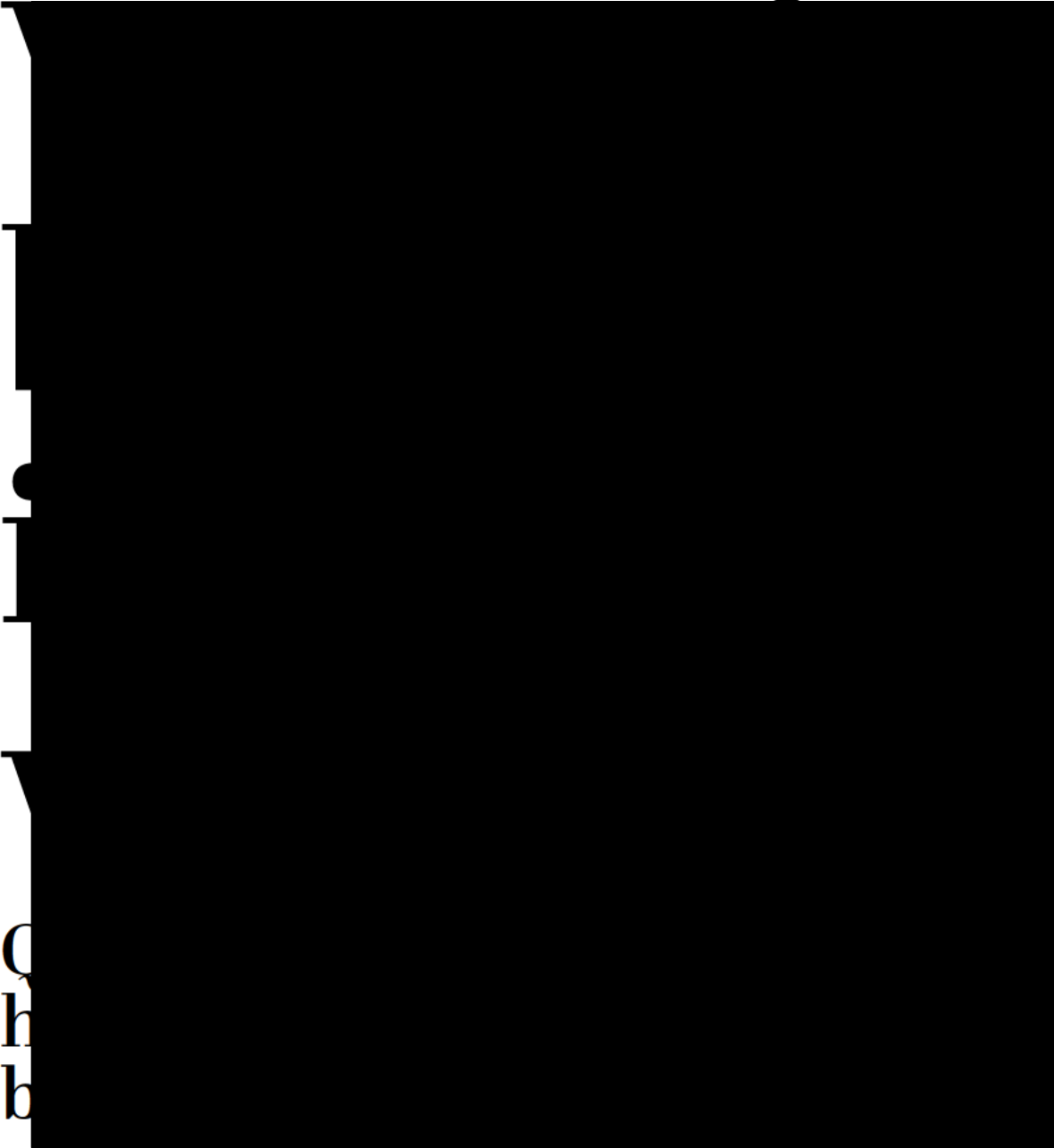
recipe cards for every reader

PLUS!

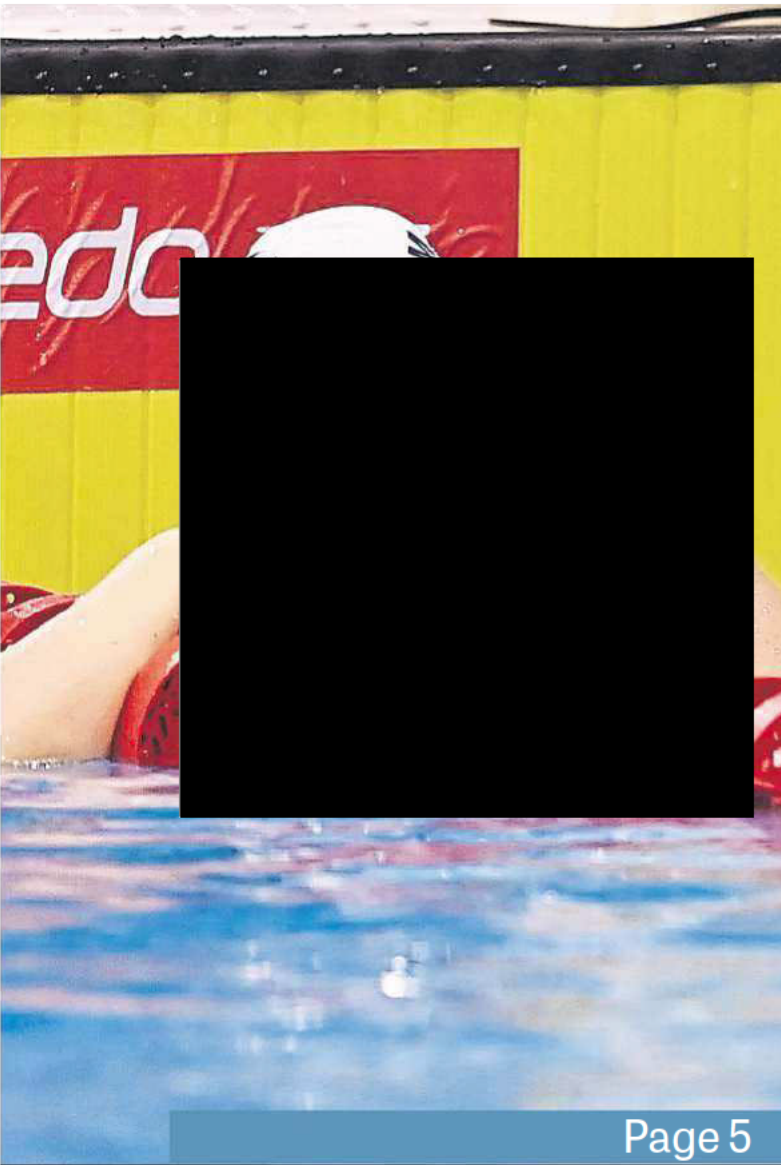
Enter to win a £100 Squishmallows bundle

terms and conditions apply

ETA TTS ON PAGE 8



Page 3



Page 5

Olivia's pride at Paralympic gold



QUALITY CONSERVATORIES,
WINDOWS & DOORS
TAILORED TO YOUR NEEDS

When only the best will do



RATED: EXCELLENT
100+ REVIEWS ON TRUSTPILOT

PUBLIC NOTICES

TRAFFIC NOTICES

BUCKINGHAMSHIRE COUNCIL

THE COUNCIL INTENDS TO MAKE

(Winslow Rd, Granborough) (Temporary Prohibition of Through Traffic) Order, 2024 which will temporarily prohibit any vehicle from proceeding, except for access, in Winslow Rd for approx 66M. Alternative route: Granborough Rd, Burleys Rd, Vicarage Rd, High St, Sheep St, Aylesbury Rd, Winslow Rd, Hurdlesgrove Hill, Buckingham Rd, Oving Rd, North Marston Ln, Whitchurch Ln, Pulpit Ln, Marston Hill, Portway, Marston Rd and vice versa. The closure is required whilst Anglian Water new connection works commence on 31st October 2024. The proposed Order will come into operation on 31st October 2024, as signed, with maximum 18 months duration.

TRUSTEES NOTICES

Lindberg Lemuel Halsall
(Deceased)

Pursuant to the Trustee Act 1925 any persons having a claim against or an interest in the Estate of the above named, late of 19 Wharf View Buckingham, MK18 1XF, who died on 23/02/2023, are required to send written particulars thereof to the undersigned on or before 12/11/2024, after which date the Estate will be distributed having regard only to the claims and interests of which they have had notice.

Rachel Stafford Legal Services, 22 Whittle Road, Thame, Oxfordshire, GB, OX9 3PF

Peter James Cowan (Deceased)

Pursuant to the Trustee Act 1925 any persons having a claim against or an interest in the Estate of the above named, late of 9 Byron Close Towcester Northamptonshire, NN12 6JT, who died on 21/07/2024, are required to send written particulars thereof to the undersigned on or before 12/11/2024, after which date the Estate will be distributed having regard only to the claims and interests of which they have had notice.

ARNOLD THOMSON SOLICITORS,
205 WATLING STREET WEST, TOWCESTER,
GB, NN12 6BX

GVOL

Goods Vehicle Operator's Licence

Master Muck Ltd of R/O Chiltern View Nursery Wendover Road Stoke Mandeville Aylesbury HP22 5GX is applying to change an existing licence as follows: To keep an extra 2 goods vehicles and 0 trailers at the operating centre at R/O Chiltern View Nursery Wendover Road Stoke Mandeville Aylesbury HP22 5GX.

Owners or occupiers of land (including buildings) near the operating centre(s) who believe that their use or enjoyment of that land would be affected, should make written representations to the Traffic Commissioner at Hillcrest House, 386 Harehills Lane, Leeds LS9 6NF, stating their reasons, within 21 days of this notice. Representors must at the same time send a copy of their representations to the applicant at the address given at the top of this notice. A Guide to Making Representations is available from the Traffic Commissioner's office.

PLANNING NOTICES



Section 48 – Planning Act 2008 – Rosefield Solar Farm
Notice publicising a proposed application for a Development

Consent Order Regulation 4 Infrastructure Planning (Applications: Prescribed Forms and Procedure) Regulations 2009

Notice under Section 48 of the Planning Act is hereby given that Rosefield Energyfarm Limited (11618221) of Alexander House 1 Mandarin Road, Rainton Bridge Business Park, Houghton Le Spring, Sunderland, England, DH4 5RA (the "Applicant") proposes to make an application ("the Application") to the Secretary of State for Energy Security and Net Zero under Section 37 of the Planning Act 2008 for a Development Consent Order ("DCO"). The Applicant intends to make the Application in Q2 2025.

The Application is for the proposed Rosefield Solar Farm ("the Proposed Development") at land south of Buckingham, close to the settlements of Steeple Claydon, East Claydon, Middle Claydon, Botolph Claydon and Calvert ("the Site") within the administrative boundary of Buckinghamshire Council. The Rosefield Solar Farm would cover an area of approximately 771 hectares.

The DCO would authorise:

- construction, operation (including maintenance) and decommissioning of ground mounted solar PV arrays, Balance of Solar System, Collector Compounds and Battery Energy Storage System, along with distribution cables.
- other association and ancillary works including a new substation, known as Rosefield Substation, which would be connected to the PV arrays and battery storage via distribution cables. Underground cabling would connect to the Rosefield Substation to the point of connection into the National Electricity Transmission System via a 400kV grid connection cable route.
- other infrastructure works including on-site cabling, ancillary buildings such as offices and welfare areas, access tracks, and any other works identified as necessary to enable the Proposed Development. There would also be parts of the Site used for landscaping which would include features such as biodiversity mitigation and enhancement measures, amenity improvements and fencing.
- The compulsory acquisition of land and/or rights and the taking of temporary possession of land.
- Offsite highway works (if required).
- The overriding of easements and other rights over or affecting land.
- The application and/or disapplication of legislation relating to the Proposed Development.
- Such ancillary, incidental and consequential provisions, licences, property rights, permits and consents as are necessary and and/or convenient.

The Proposed Development is an Environmental Impact Assessment ("EIA") development and accordingly a Preliminary Environmental Information Report ("PEIR") has been produced and is included as part of the consultation materials. The PEIR sets out the preliminary environmental information on the Proposed Development. The Applicant is carrying out an EIA and will submit an Environmental Statement as part of its DCO application. The Applicant has produced a Statement of Community Consultation ("SoCC") in accordance with section 47 of the Planning Act 2008 which explains how the Applicant will consult with the local community and stakeholders about the Proposed Development. The SoCC can be viewed free of charge at <https://rosefieldsolarfarm.co.uk/document-library/>, or at the deposit locations set out below. The consultation will be carried out in accordance with the SoCC.

Consultation on the proposals will take place from **18 September 2024 to 14 November 2024**. The Applicant will publish consultation materials including a consultation booklet showing the nature and location of the Proposed Development, a consultation questionnaire and the PEIR. These will be available online free of charge from 18 September 2024 to 14 November 2024 at <https://rosefieldsolarfarm.co.uk/document-library/> being a website maintained by or on behalf of the Applicant. Copies of the consultation materials will be available for inspection free of charge during the consultation period at locations listed below (Table 1), as well as on USB or in hard copy on request to the Applicant from 18 September 2024.

There are a number of ways to find out more about the Proposed Development including:

- Attending a public event which we will hold in locations around the Site at the following times and locations:
 - Calvert Green Village Hall and Brickworx Bar, **Thursday 3 October (2pm-6pm)**
 - East and Botolph Claydon Village Hall, **Friday 4 October (4pm-8pm)**
 - Quainton Memorial Hall, **Saturday 5 October (10am-2pm)**
 - Steeple Claydon Village Hall, **Friday 18 October (3.30pm-8pm)**
 - Quainton Memorial Hall, **Saturday 19 October (10am-2pm)**
- Viewing the virtual exhibition on the project website: <https://rosefieldsolarfarm.co.uk/>. The virtual exhibition will be accessible from 18 September 2024 to 14 November 2024.
- Reading the consultation booklet which will be available from 18 September 2024 online or in hard copy on request, at deposit points around the area (listed below) and at the public events.
- Reviewing the PEIR, which will be available from 18 September 2024, by going to <https://rosefieldsolarfarm.co.uk/document-library/> or visiting a deposit point.
- Getting in touch using the contact details below.

Table 1: Deposit points

Deposit location	Opening hours
East and Botolph Claydon Village Hall Botyl Road, Botolph Claydon MK18 2LR	Monday to Thursday 8am-11pm Friday to Saturday 8am-12am
Winslow Community Library Park Rd, Winslow MK18 3DN	Monday 9.30am – 5pm Wednesday 9.30am – 1pm Friday 1 – 5pm Saturday 9.30am – 1pm

*Please check opening times before travelling

Copies of the consultation materials may be requested during the consultation period from the Applicant using the e-mail address, Freepost address or Freephone number provided below.

The Applicant will provide USBs containing all the consultation materials including the PEIR free of charge. Printed copies of the consultation booklet, SoCC and questionnaire will be available free of charge. Requests for printed copies of the PEIR will be reviewed on a case- by-case basis. A fee to cover printing costs (up to a maximum of £750 for one full set of consultation documents) may be charged to the recipient. To request materials in an alternate format, please get in touch using the contact details below.

Any person may comment on the proposals or otherwise respond to this publicity. Responses must be received between 18 September 2024 to 14 November 2024 through any of the following ways:

- Completing the consultation questionnaire online at www.rosefieldsolarfarm.co.uk.
- Returning a questionnaire by Freepost (no stamp required) or submitting your comments to the following address: Rosefield Solar Farm, FREEPOST SEC Newgate UK LOCAL.
- Returning a questionnaire or submitting your comments by email: info@rosefieldsolarfarm.co.uk.

When providing your response, please include your name and address or, if you would prefer your comments to be anonymous, your postcode only. Please also confirm the nature of your interest in the Proposed Development.

Responses must be received no later than 11:59pm on Thursday 14 November 2024.

The Applicant will consider and have regard to all responses received by the above deadline when developing the Application for a DCO once consultation has closed. Responses will form the basis of a Consultation Report that will be one of the factors taken into consideration by the Secretary of State when deciding whether the Application can be accepted for Examination. Therefore, in providing any comment, it should be borne in mind that the substance of it may be communicated to others as part of the Consultation Report.

If you would like further information about this notice, the consultation or the Proposed Development, please contact the project team by using one of the contact methods provided below:

- By Freephone: 0800 8611097
- By email: info@rosefieldsolarfarm.co.uk
- By Freepost: Rosefield Solar Farm, FREEPOST SEC Newgate UK LOCAL

FOR ALL
YOUR LATEST
INFORMATION
ON PLANNING
PROPOSALS,
TRAFFIC NOTICES,
GOODS VEHICLE
OPERATOR
LICENCES,
LICENCES TO SELL
ALCOHOL AND
PROBATE NOTICES

SEE OUR PUBLIC
NOTICES SECTION

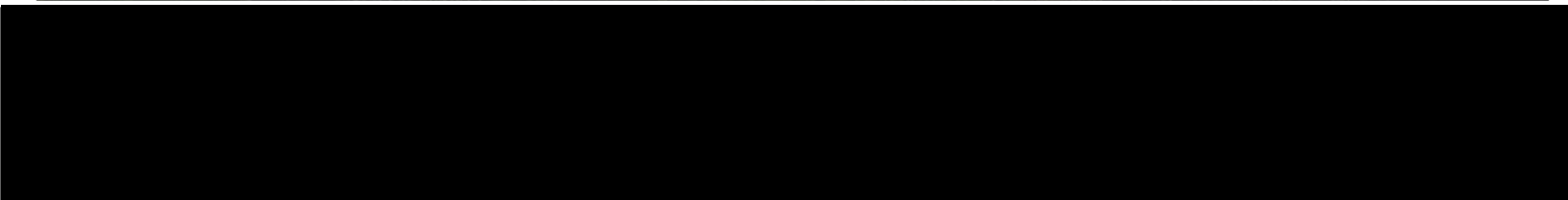
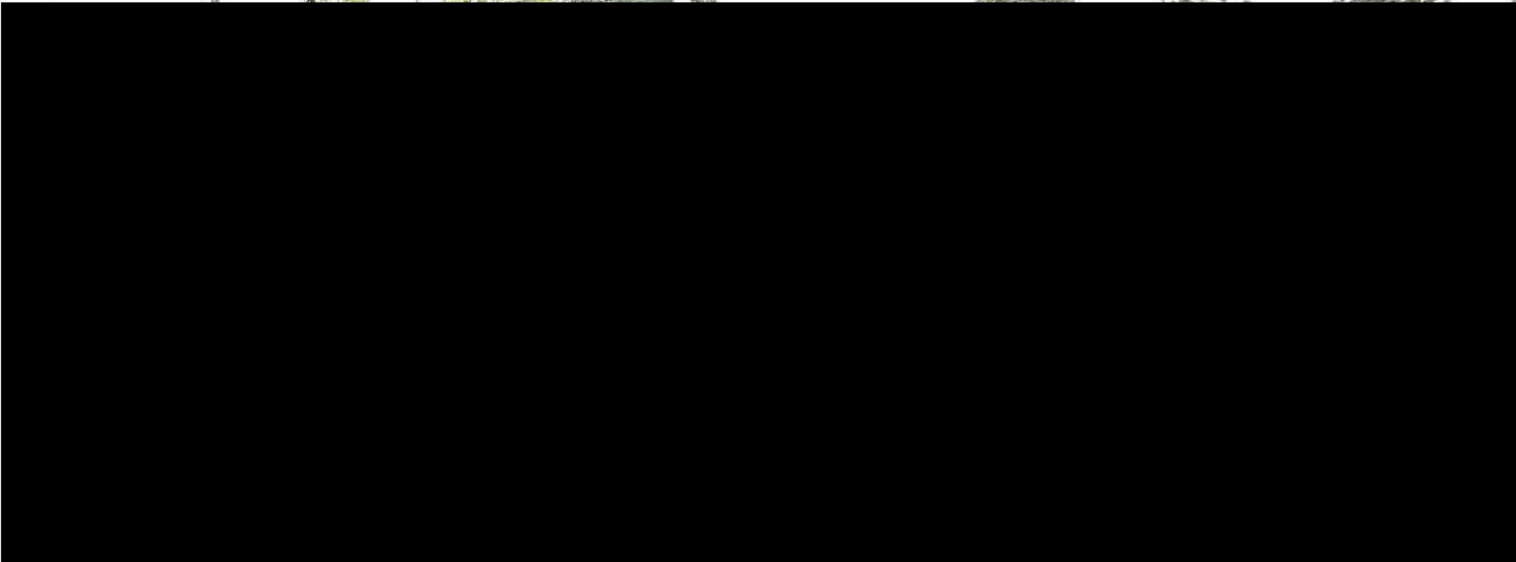
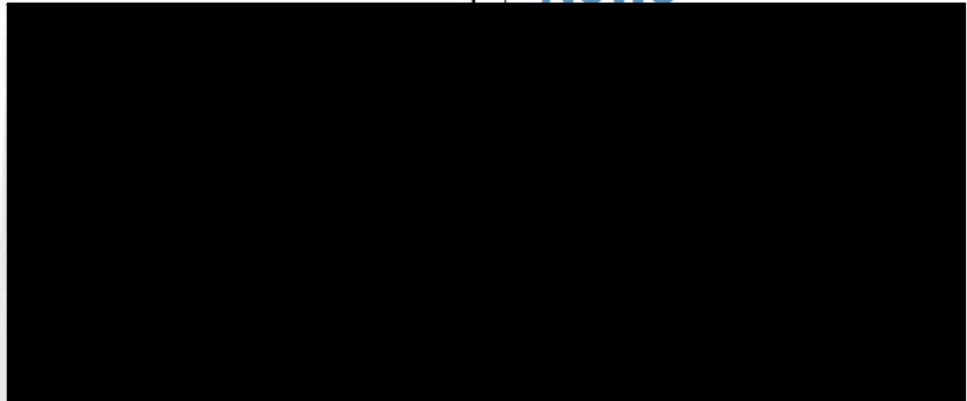


Get Bucks news to your inbox, visit [redacted]

Wednesday, September 18, 2024

£1.60

ZIP WIRE TRIBUTE TO DYLAN



News

farm plans

Page 7

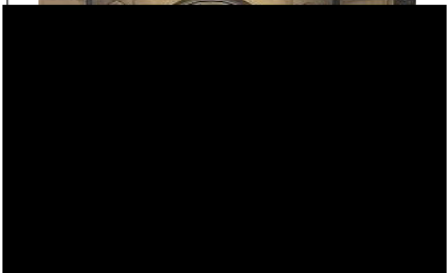
Property



1930s style revisited

Page 12

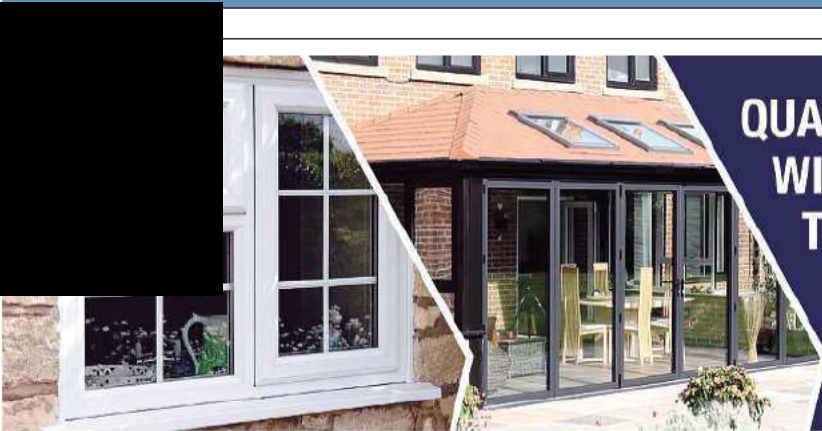
Leisure



What's on this week

Page 3

Page 24



QUALITY CONSERVATORIES,
WINDOWS & DOORS
TAILORED TO YOUR NEEDS

When only the best will do



RATED: **EXCELLENT**
100+ REVIEWS ON TRUSTPILOT

PLANNING NOTICES



Section 48 – Planning Act 2008 – Rosefield Solar Farm
Notice publicising a proposed application for a Development
Consent Order Regulation 4 Infrastructure Planning (Applications: Prescribed Forms and Procedure) Regulations 2009

Notice under Section 48 of the Planning Act is hereby given that Rosefield Energyfarm Limited (11618221) of Alexander House 1 Mandarin Road, Rainton Bridge Business Park, Houghton Le Spring, Sunderland, England, DH4 5RA (the “Applicant”) proposes to make an application (“the Application”) to the Secretary of State for Energy Security and Net Zero under Section 37 of the Planning Act 2008 for a Development Consent Order (“DCO”). The Applicant intends to make the Application in Q2 2025.

The Application is for the proposed Rosefield Solar Farm (“the Proposed Development”) at land south of Buckingham, close to the settlements of Steeple Claydon, East Claydon, Middle Claydon, Botolph Claydon and Calvert (“the Site”) within the administrative boundary of Buckinghamshire Council. The Rosefield Solar Farm would cover an area of approximately 771 hectares.

The DCO would authorise:

- construction, operation (including maintenance) and decommissioning of ground mounted solar PV arrays, Balance of Solar System, Collector Compounds and Battery Energy Storage System, along with distribution cables.
- other association and ancillary works including a new substation, known as Rosefield Substation, which would be connected to the PV arrays and battery storage via distribution cables. Underground cabling would connect to the Rosefield Substation to the point of connection into the National Electricity Transmission System via a 400kV grid connection cable route.
- other infrastructure works including on-site cabling, ancillary buildings such as offices and welfare areas, access tracks, and any other works identified as necessary to enable the Proposed Development. There would also be parts of the Site used for landscaping which would include features such as biodiversity mitigation and enhancement measures, amenity improvements and fencing.
- The compulsory acquisition of land and/or rights and the taking of temporary possession of land.
- Offsite highway works (if required).
- The overriding of easements and other rights over or affecting land.
- The application and/or disapplication of legislation relating to the Proposed Development.
- Such ancillary, incidental and consequential provisions, licences, property rights, permits and consents as are necessary and and/or convenient.

The Proposed Development is an Environmental Impact Assessment (“EIA”) development and accordingly a Preliminary Environmental Information Report (“PEIR”) has been produced and is included as part of the consultation materials. The PEIR sets out the preliminary environmental information on the Proposed Development. The Applicant is carrying out an EIA and will submit an Environmental Statement as part of its DCO application. The Applicant has produced a Statement of Community Consultation (“SoCC”) in accordance with section 47 of the Planning Act 2008 which explains how the Applicant will consult with the local community and stakeholders about the Proposed Development. The SoCC can be viewed free of charge at <https://rosefieldsolarfarm.co.uk/document-library/>, or at the deposit locations set out below. The consultation will be carried out in accordance with the SoCC.

Consultation on the proposals will take place from **18 September 2024 to 14 November 2024**. The Applicant will publish consultation materials including a consultation booklet showing the nature and location of the Proposed Development, a consultation questionnaire and the PEIR. These will be available online free of charge from 18 September 2024 to 14 November 2024 at <https://rosefieldsolarfarm.co.uk/document-library/> being a website maintained by or on behalf of the Applicant. Copies of the consultation materials will be available for inspection free of charge during the consultation period at locations listed below (Table 1), as well as on USB or in hard copy on request to the Applicant from 18 September 2024.

There are a number of ways to find out more about the Proposed Development including:

- Attending a public event which we will hold in locations around the Site at the following times and locations:
 - Calvert Green Village Hall and Brickworx Bar, **Thursday 3 October (2pm-6pm)**
 - East and Botolph Claydon Village Hall, **Friday 4 October (4pm-8pm)**
 - Quainton Memorial Hall, **Saturday 5 October (10am-2pm)**
 - Steeple Claydon Village Hall, **Friday 18 October (3.30pm-8pm)**
 - Quainton Memorial Hall, **Saturday 19 October (10am-2pm)**
- Viewing the virtual exhibition on the project website: <https://rosefieldsolarfarm.co.uk/>. The virtual exhibition will be accessible from 18 September 2024 to 14 November 2024.
- Reading the consultation booklet which will be available from 18 September 2024 online or in hard copy on request, at deposit points around the area (listed below) and at the public events.
- Reviewing the PEIR, which will be available from 18 September 2024, by going to <https://rosefieldsolarfarm.co.uk/document-library/> or visiting a deposit point.
- Getting in touch using the contact details below.

Deposit location	Opening hours
East and Botolph Claydon Village Hall Botyl Road, Botolph Claydon MK18 2LR	Monday to Thursday 8am-11pm Friday to Saturday 8am-12am
Winslow Community Library Park Rd, Winslow MK18 3DN	Monday 9.30am – 5pm Wednesday 9.30am – 1pm Friday 1 – 5pm Saturday 9.30am – 1pm

***Please check opening times before travelling**

Copies of the consultation materials may be requested during the consultation period from the Applicant using the e-mail address, Freepost address or Freephone number provided below.

The Applicant will provide USBs containing all the consultation materials including the PEIR free of charge. Printed copies of the consultation booklet, SoCC and questionnaire will be available free of charge. Requests for printed copies of the PEIR will be reviewed on a case- by-case basis. A fee to cover printing costs (up to a maximum of £750 for one full set of consultation documents) may be charged to the recipient. To request materials in an alternate format, please get in touch using the contact details below.

Any person may comment on the proposals or otherwise respond to this publicity. Responses must be received between 18 September 2024 to 14 November 2024 through any of the following ways:

- Completing the consultation questionnaire online at www.rosefieldsolarfarm.co.uk.
- Returning a questionnaire by Freepost (no stamp required) or submitting your comments to the following address: Rosefield Solar Farm, FREEPOST SEC Newgate UK LOCAL.
- Returning a questionnaire or submitting your comments by email: info@rosefieldsolarfarm.co.uk.

When providing your response, please include your name and address or, if you would prefer your comments to be anonymous, your postcode only. Please also confirm the nature of your interest in the Proposed Development.

Responses must be received no later than 11:59pm on Thursday 14 November 2024.

The Applicant will consider and have regard to all responses received by the above deadline when developing the Application for a DCO once consultation has closed. Responses will form the basis of a Consultation Report that will be one of the factors taken into consideration by the Secretary of State when deciding whether the Application can be accepted for Examination. Therefore, in providing any comment, it should be borne in mind that the substance of it may be communicated to others as part of the Consultation Report.

If you would like further information about this notice, the consultation or the Proposed Development, please contact the project team by using one of the contact methods provided below:

- By Freephone: 0800 8611097
- By email: info@rosefieldsolarfarm.co.uk
- By Freepost: Rosefield Solar Farm, FREEPOST SEC Newgate UK LOCAL

TRUSTEES NOTICES

Margaret Anne Langley-Roberts (Deceased)

Pursuant to the Trustee Act 1925 any persons having a claim against or an interest in the Estate of the above named, late of 5 Park Road Winslow Buckingham, MK18 3DL, who died on 29/05/2023, are required to send written particulars thereof to the undersigned on or before 19/11/2024, after which date the Estate will be distributed having regard only to the claims and interests of which they have had notice.

CHANDLER RAY SOLICITORS, 22 WEST STREET, BUCKINGHAM, GB, MK18 1HG

Nicola Diane Sutton (Deceased)

Pursuant to the Trustee Act 1925 any persons having a claim against or an interest in the Estate of the above named, late of Stratford House, Stratford Road, Aylesbury, Buckinghamshire, MK18 1NY, who died on 08/01/2018, are required to send written particulars thereof to the undersigned on or before 19/11/2024, after which date the Estate will be distributed having regard only to the claims and interests of which they have had notice.

IWC Estate Planning and Management Ltd, Suite 3, First Floor, 9-13 Bocking End, Braintree, Essex, CM7 9AE

94% OF PEOPLE PREFER TO BUY FROM LOCAL BUSINESSES.



Don't miss out, you can advertise in your local newspaper and website at a cost effective rate.

Call your friendly Classified team today to hear about our multimedia advertising solutions.

Tel: 0207 084 5207

TO ADVERTISE IN THE CLASSIFIED SECTION

PLEASE CALL 0207 084 5207

In your free food magazine

Brunch special

The brunch bunch

Rukmini Iyer's easy salmon frittatas

Feast

Issue No.347 Saturday 14 September 2024

Yotam Ottolenghi

Curried omelette with tomato salsa

Georgina Hayden

Glazed corn with citrus and avocado

Meera Sodha

South Indian vegan pasta

Brunch 50

Lebanese-style fish curry and egg kari bhoji

Ravneet Gill

Apple fritters

Peddy Choudhury

French omelette

Tom Hunt

Seed and nut butter

Rachel Roddy

My teacher friend and inspiration

Grace Dent

Imagined Bites

City breaks for late summer sun

→ Saturday



Saturday

14 September 2024

£4.00

From £2.30 for subscribers

The Guardian

News provider of the year

School academy chain is first to ban mobile phones

Exclusive
Richard Adams
Education editor

A national academy chain will be the first in England to ban mobile phones, removing access to the devices from its 35,000 pupils during the school day because of the “catastrophic” impact on children’s mental health and learning.

The Ormiston academies trust,

which runs 44 state schools including 32 secondaries, has begun phasing out access to phones at all its schools, with eight secondary schools adopting new policies this term and the rest to follow after liaising with parents.

The move comes as school leaders and policymakers across the world consider tougher restrictions on how children use and interact with smartphones, including a recent French government report recommending a bar on internet-enabled phones for children under 13, and allowing access to social media only after the age of 16.

Tom Rees, Ormiston’s chief executive, said the status quo in most schools – allowing pupils to keep phones during the school day – was an inadequate response to the disruption phones cause to students’ learning and wellbeing.

“We are seeing huge and real concerns around mental health, post-pandemic,” Rees said. These are not

just self-reported, we also have real concerns about self-harm, attempted suicide, A&E admissions – these are facts from across the world involving young people and adolescents.

“We’re seeing a clear correlation between that and mobile phone and social media use, in particular. Not all mobile phone use is equal and the relationship between that and adolescent mental health, we think, is overwhelming.

“There is a responsibility

Autumn books

Sally Rooney

Interview

Saturday



30 best

Section 48 – Planning Act 2008 – Rosefield Solar Farm

Notice publicising a proposed application for a Development Consent Order

Regulation 4 Infrastructure Planning

(Applications: Prescribed Forms and Procedure) Regulations 2009



Notice under Section 48 of the Planning Act is hereby given that Rosefield Energyfarm Limited (11618221) of Alexander House 1 Mandarin Road, Rainton Bridge Business Park, Houghton Le Spring, Sunderland, England, DH4 5RA (the "Applicant") proposes to make an application ("the Application") to the Secretary of State for Energy Security and Net Zero under Section 37 of the Planning Act 2008 for a Development Consent Order ('DCO'). The Applicant intends to make the Application in Q2 2025.

The Application is for the proposed Rosefield Solar Farm ("the Proposed Development") at land south of Buckingham, close to the settlements of Steeple Claydon, East Claydon, Middle Claydon, Botolph Claydon and Calvert ("the Site") within the administrative boundary of Buckinghamshire Council. The Rosefield Solar Farm would cover an area of approximately 771hectares.

The DCO would authorise:

- construction, operation (including maintenance) and decommissioning of ground mounted solar PV arrays, Balance of Solar System, Collector Compounds and Battery Energy Storage System, along with distribution cables.
- other association and ancillary works including a new substation, known as Rosefield Substation, which would be connected to the PV arrays and battery storage via distribution cables. Under ground cabling would connect to the Rosefield Substation to the point of connection into the National Electricity Transmission System via a 400kV grid connection cable route.
- other infrastructure works including on-site cabling, ancillary buildings such as offices and welfare areas, access tracks, and any other works identified as necessary to enable the Proposed Development. There would also be parts of the Site used for landscaping which would include features such as biodiversity mitigation and enhancement measures, amenity improvements and fencing.
- The compulsory acquisition of land and/or rights and the taking of temporary possession of land.
- Offsite highway works (if required).
- The overriding of easements and other rights over or affecting land.
- The application and/or disapplication of legislation relating to the Proposed Development.
- Such ancillary, incidental and consequential provisions, licences, property rights, permits and consents as are necessary and and/or convenient.

The Proposed Development is an Environmental Impact Assessment ('EIA') development and accordingly a Preliminary Environmental Information Report ('PEIR') has been produced and is included as part of the consultation materials. The PEIR sets out the preliminary environmental information on the Proposed Development. The Applicant is carrying out an EIA and will submit an Environmental Statement as part of its DCO application.

The Applicant has produced a Statement of Community Consultation ('SoCC') in accordance with section 47 of the Planning Act 2008 which explains how the Applicant will consult with the local community and stakeholders about the Proposed Development. The SoCC can be viewed free of charge at <https://rosefieldsolarfarm.co.uk/document-library/>, or at the deposit locations set out below. The consultation will be carried out in accordance with the SoCC.

Consultation on the proposals will take place from **18 September 2024 to 14 November 2024**. The Applicant will publish consultation materials including a consultation booklet showing the nature and location of the Proposed Development, a consultation questionnaire and the PEIR. These will be available online free of charge from 18 September 2024 to 14 November 2024 at <https://rosefieldsolarfarm.co.uk/document-library/> being a website maintained by or on behalf of the Applicant. Copies of the consultation materials will be available for inspection free of charge during the consultation period at locations listed below (Table 1), as well as on USB or in hard copy on request to the Applicant from 18 September 2024.

There are a number of ways to find out more about the Proposed Development including:

- Attending a public event which we will hold in locations around the Site at the following times and locations:
 - Calvert Green Village Hall and Brickworx Bar, **Thursday 3 October (2pm–6pm)**
 - East and Botolph Claydon Village Hall, **Friday 4 October (4pm–8pm)**
 - Quainton Memorial Hall, **Saturday 5 October (10am–2pm)**
 - Steeple Claydon Village Hall, **Friday 18 October (3.30pm–8pm)**
 - Quainton Memorial Hall, **Saturday 19 October (10am–2pm)**
- Viewing the virtual exhibition on the project website: <https://rosefieldsolarfarm.co.uk/>. The virtual exhibition will be accessible from 18 September 2024 to 14 November 2024.
- Reading the consultation booklet which will be available from 18 September 2024 online or in hard copy on request, at deposit points around the area (listed below) and at the public events.
- Reviewing the PEIR, which will be available from 18 September 2024, by going to <https://rosefieldsolarfarm.co.uk/document-library/> or visiting a deposit point.
- Getting in touch using the contact details below.

Table 1: Deposit points

Deposit location	Opening hours
East and Botolph Claydon Village Hall Botyl Road, Botolph Claydon MK18 2LR	Monday to Thursday 8am–11pm Friday to Saturday 8am–12am
Winslow Community Library Park Rd, Winslow MK18 3DN	Monday 9.30am – 5pm Wednesday 9.30am – 1pm Friday 1 – 5pm Saturday 9.30am – 1pm

**Please check opening times before travelling*

Copies of the consultation materials may be requested during the consultation period from the Applicant using the e-mail address, Freepost address or Freephone number provided below.

The Applicant will provide USBs containing all the consultation materials including the PEIR free of charge. Printed copies of the consultation booklet, SoCC and questionnaire will be available free of charge. Requests for printed copies of the PEIR will be reviewed on a case-by-case basis. A fee to cover printing costs (up to a maximum of £750 for one full set of consultation documents) may be charged to the recipient. To request materials in an alternate format, please get in touch using the contact details below.

Any person may comment on the proposals or otherwise respond to this publicity. Responses must be received between 18 September 2024 to 14 November 2024 through any of the following ways:

- Completing the consultation questionnaire online at www.rosefieldsolarfarm.co.uk.
- Returning a questionnaire by Freepost (no stamp required) or submitting your comments to the following address: Rosefield Solar Farm, FREEPOST SEC Newgate UK LOCAL.
- Returning a questionnaire or submitting your comments by email: info@rosefieldsolarfarm.co.uk.

When providing your response, please include your name and address or, if you would prefer your comments to be anonymous, your postcode only. Please also confirm the nature of your interest in the Proposed Development.

Responses must be received no later than 11:59pm on Thursday 14 November 2024.

The Applicant will consider and have regard to all responses received by the above deadline when developing the Application for a DCO once consultation has closed. Responses will form the basis of a Consultation Report that will be one of the factors taken into consideration by the Secretary of State when deciding whether the Application can be accepted for Examination. Therefore, in providing any comment, it should be borne in mind that the substance of it may be communicated to others as part of the Consultation Report.

If you would like further information about this notice, the consultation or the Proposed Development, please contact the project team by using one of the contact methods provided below:

- By Freephone: 0800 8611097
- By email: info@rosefieldsolarfarm.co.uk
- By Freepost: Rosefield Solar Farm, FREEPOST SEC Newgate UK LOCAL



THE GAZETTE

LONDON GAZETTE

**CONTAINING ALL NOTICES PUBLISHED ONLINE ON
18 SEPTEMBER 2024**

PRINTED ON 19 SEPTEMBER 2024 | NUMBER 64518
PUBLISHED BY AUTHORITY | ESTABLISHED 1665
WWW.THEGAZETTE.CO.UK

Contents

State/

Royal family/

Parliament Assemblies & Government/

Honours & Awards/

Church/

Environment & infrastructure/18114*

Health & medicine/

Other Notices/18128*

Money/

Companies/18129*

People/18186*

Terms & Conditions/18209*

* Containing all notices published online on 18 September
2024

24. The Metropolitan Borough of Wirral No. 7 (Greasby) Smoke Control Order 1982
25. The Metropolitan Borough of Wirral No. 8 (Pensby) Smoke Control Order 1991
26. The Metropolitan Borough of Wirral No. 9 (Deeside and Rural) Smoke Control Order 1992 (4706030)

TRANSPORT

TRANSPORT FOR LONDON GREATER LONDON AUTHORITY ACT 1999 TRANSPORT ACT 2000 ROAD USER CHARGING

TRANSPORT FOR LONDON, as the charging authority for the Ultra Low Emission Zone ('ULEZ') and Low Emission Zone ('LEZ') road user charging scheme, hereby gives notice that the Greater London Low Emission Zone Charging (Exceptional Variation) Order 2024 ('the Order') was made on 21 August 2024 and was confirmed by the Mayor of London on 2 September 2024.

The Order came into force on the day after it was confirmed.

The Order amends the Greater London Low Emission Zone Charging Scheme Order 2006 which establishes the ULEZ and LEZ scheme and provides for a daily road user charge to apply to vehicles which are used within the respective zones and which do not meet the scheme's vehicle standards (unless exempt or registered for a discount). The effect of the amendment is that the ULEZ grace period which applies to non-compliant minibuses operated by not-for-profit organisations for community transport purposes until 26 October 2025 is extended for two years to 24 October 2027.

The Order may be downloaded from: <https://tfl.gov.uk/corporate/publications-and-reports/ultra-low-emission-zone> and <https://tfl.gov.uk/corporate/publications-and-reports/low-emission-zone>.

(4706021)

Planning

TOWN PLANNING

DEPARTMENT FOR TRANSPORT TOWN AND COUNTRY PLANNING ACT 1990

The Secretary of State gives notice of an Order made under Section 247 of the above Act entitled "The Stopping up of Highways (Yorkshire & Humber) (No.11) Order 2024" authorising the stopping up of an irregular shaped northern part width of Exchange Street at its junction with Waingate and an irregular shaped eastern part width of Waingate at Sheffield, in the City of Sheffield. This is to enable development as permitted by Sheffield City Council, under reference 23/00493/OUT.

Copies of the Order may be obtained, free of charge, from the Secretary of State, National Transport Casework Team, Tyneside House, Skinnerburn Road, Newcastle Business Park, Newcastle upon Tyne NE4 7AR or nationalcasework@dft.gov.uk (quoting NATTRAN/Y&H/S247/5715). They may also be inspected during normal opening hours at First Point, Howden House, 1 Union Street, Sheffield, S1 2SH.

Any person who wishes to challenge the validity of the decision to make the Order may apply to the High Court within 6 weeks from 18 September 2024.

N Crass, Casework Manager

(4706027)

DEPARTMENT FOR TRANSPORT TOWN AND COUNTRY PLANNING ACT 1990

The Secretary of State gives notice of an Order made under Section 247 of the above Act entitled "The Stopping up of Highway (East) (No.16) Order 2024" authorising the stopping up of an irregular shaped western part width of Enterprise Way at Luton, in the Borough of Luton. This is to enable development as permitted by Luton Borough Council, under reference 23/00985/MMAMD.

Copies of the Order may be obtained, free of charge, from the Secretary of State, National Transport Casework Team, Tyneside House, Skinnerburn Road, Newcastle Business Park, Newcastle upon Tyne NE4 7AR or nationalcasework@dft.gov.uk (quoting NATTRAN/E/S247/5754). They may also be inspected during normal opening hours at Marsh Farm Library, Lea Manor School, Northwell Drive, Luton, LU3 3TL.

Any person who wishes to challenge the validity of the decision to make the Order may apply to the High Court within 6 weeks from 18 September 2024.

N Crass, Casework Manager

(4706029)

ROSEFIELD SOLAR FARM

SECTION 48 – PLANNING ACT 2008 – ROSEFIELD SOLAR FARM NOTICE PUBLICISING A PROPOSED APPLICATION FOR A DEVELOPMENT CONSENT ORDER

REGULATION 4 INFRASTRUCTURE PLANNING (APPLICATIONS: PRESCRIBED FORMS AND PROCEDURE) REGULATIONS 2009

Notice under Section 48 of the Planning Act is hereby given that Rosefield Energyfarm Limited (11618221) of Alexander House 1 Mandarin Road, Rainton Bridge Business Park, Houghton Le Spring, Sunderland, England, DH4 5RA (the "Applicant") proposes to make an application ("the Application") to the Secretary of State for Energy Security and Net Zero under Section 37 of the Planning Act 2008 for a Development Consent Order ('DCO'). The Applicant intends to make the Application in Q2 2025.

The Application is for the proposed Rosefield Solar Farm ("the Proposed Development") at land south of Buckingham, close to the settlements of Steeple Claydon, East Claydon, Middle Claydon, Botolph Claydon and Calvert ("the Site") within the administrative boundary of Buckinghamshire Council. The Rosefield Solar Farm would cover an area of approximately 771 hectares.

The DCO would authorise:

- construction, operation (including maintenance) and decommissioning of ground mounted solar PV arrays, Balance of Solar System, Collector Compounds and Battery Energy Storage System, along with distribution cables.
- other association and ancillary works including a new substation, known as Rosefield Substation, which would be connected to the PV arrays and battery storage via distribution cables. Underground cabling would connect to the Rosefield Substation to the point of connection into the National Electricity Transmission System via a 400kV grid connection cable route.
- other infrastructure works including on-site cabling, ancillary buildings such as offices and welfare areas, access tracks, and any other works identified as necessary to enable the Proposed Development. There would also be parts of the Site used for landscaping which would include features such as biodiversity mitigation and enhancement measures, amenity improvements and fencing.
- The compulsory acquisition of land and/or rights and the taking of temporary possession of land.
- Offsite highway works (if required).
- The overriding of easements and other rights over or affecting land.
- The application and/or disapplication of legislation relating to the Proposed Development.
- Such ancillary, incidental and consequential provisions, licences, property rights, permits and consents as are necessary and and/or convenient.

The Proposed Development is an Environmental Impact Assessment ('EIA') development and accordingly a Preliminary Environmental Information Report ('PEIR') has been produced and is included as part of the consultation materials. The PEIR sets out the preliminary environmental information on the Proposed Development. The Applicant is carrying out an EIA and will submit an Environmental Statement as part of its DCO application.

The Applicant has produced a Statement of Community Consultation ('SoCC') in accordance with section 47 of the Planning Act 2008 which explains how the Applicant will consult with the local community and stakeholders about the Proposed Development. The SoCC can be viewed free of charge at <https://rosefieldsolarfarm.co.uk/document-library/>, or at the deposit locations set out below. The consultation will be carried out in accordance with the SoCC.

Consultation on the proposals will take place from 18 September 2024 to 14 November 2024. The Applicant will publish consultation materials including a consultation booklet showing the nature and location of the Proposed Development, a consultation questionnaire and the PEIR. These will be available online free of charge from 18 September 2024 to 14 November 2024 at <https://rosefieldsolarfarm.co.uk/document-library/> being a website maintained by or on behalf of the Applicant. Copies of the consultation materials will be available for inspection free of charge during the consultation period at locations listed below (Table 1), as well as on USB or in hard copy on request to the Applicant from 18 September 2024.

There are a number of ways to find out more about the Proposed Development including:

- Attending a public event which we will hold in locations around the Site at the following times and locations:
 - o Calvert Green Village Hall and Brickworx Bar, Thursday 3 October (2pm-6pm)
 - o East and Botolph Claydon Village Hall, Friday 4 October (4pm-8pm)
 - o Quanton Memorial Hall, Saturday 5 October (10am-2pm)
 - o Steeple Claydon Village Hall, Friday 18 October (3.30pm-8pm)
 - o Quanton Memorial Hall, Saturday 19 October (10am-2pm)
- Viewing the virtual exhibition on the project website: <https://rosefieldsolarfarm.co.uk/>. The virtual exhibition will be accessible from 18 September 2024 to 14 November 2024.
- Reading the consultation booklet which will be available from 18 September 2024 online or in hard copy on request, at deposit points around the area (listed below) and at the public events.
- Reviewing the PEIR, which will be available from 18 September 2024, by going to <https://rosefieldsolarfarm.co.uk/document-library/> or visiting a deposit point.
- Getting in touch using the contact details below.

TABLE 1: DEPOSIT POINTS

Deposit location	Opening hours
East and Botolph Claydon Village Hall: Botyl Road, Botolph Claydon MK18 2LR	Monday to Thursday 8am-11pm Friday to Saturday 8am-12am
Winslow Community Library: Park Rd, Winslow MK18 3DN	Monday 9.30am – 5pm Wednesday 9.30am – 1pm Friday 1 – 5pm Saturday 9.30am – 1pm

**Please check opening times before travelling*

Copies of the consultation materials may be requested during the consultation period from the Applicant using the e-mail address, Freepost address or Freephone number provided below.

The Applicant will provide USBs containing all the consultation materials including the PEIR free of charge. Printed copies of the consultation booklet, SoCC and questionnaire will be available free of charge. Requests for printed copies of the PEIR will be reviewed on a case-by-case basis. A fee to cover printing costs (up to a maximum of £750 for one full set of consultation documents) may be charged to the recipient. To request materials in an alternate format, please get in touch using the contact details below.

Any person may comment on the proposals or otherwise respond to this publicity. Responses must be received between 18 September 2024 to 14 November 2024 through any of the following ways:

- Completing the consultation questionnaire online at www.rosefieldsolarfarm.co.uk.
- Returning a questionnaire by Freepost (no stamp required) or submitting your comments to the following address: Rosefield Solar Farm, FREEPOST SEC Newgate UK LOCAL.
- Returning a questionnaire or submitting your comments by email: info@rosefieldsolarfarm.co.uk.

When providing your response, please include your name and address or, if you would prefer your comments to be anonymous, your postcode only. Please also confirm the nature of your interest in the Proposed Development.

Responses must be received no later than 11:59pm on Thursday 14 November 2024.

The Applicant will consider and have regard to all responses received by the above deadline when developing the Application for a DCO once consultation has closed. Responses will form the basis of a Consultation Report that will be one of the factors taken into consideration by the Secretary of State when deciding whether the Application can be accepted for Examination. Therefore, in providing any comment, it should be borne in mind that the substance of it may be communicated to others as part of the Consultation Report.

If you would like further information about this notice, the consultation or the Proposed Development, please contact the project team by using one of the contact methods provided below:

- By Freephone: 0800 8611097
- By email: info@rosefieldsolarfarm.co.uk
- By Freepost: Rosefield Solar Farm, FREEPOST SEC Newgate UK LOCAL (4706022)

Roads & highways

ROAD RESTRICTIONS



City of Westminster

ALLITSEN ROAD

THE CITY OF WESTMINSTER (PARKING PLACES) (C ZONE) (AMENDMENT NO. 135) ORDER 2024

1. NOTICE IS HEREBY GIVEN that Westminster City Council on 16th September 2024 made the above Order under section 45, 46, 49 and 124 of and Part IV of Schedule 9 to the Road Traffic Regulation Act 1984, as amended.

2. The general effect of the Order will be to remove 5 metres of residents' parking from the north-west side of Allitsen Road, outside the entrance to De Walden House, to be replaced with double yellow line "at any time" waiting restrictions.

3. The Order, which will come into force on 23rd September 2024, and other documents giving more detailed particulars of the Order are available for inspection until 28th October 2024 at <https://westminstertransportationservices.co.uk/notices> and, in person by appointment only, at Westminster City Hall, 64 Victoria Street, London, SW1E 6QP, between 9.00 a.m. and 5.00 p.m. on Mondays to Fridays (except bank / public holidays). Please telephone (020) 3116 9388 or email tmo.westminster@wsp.com to arrange an appointment.

4. Any person desiring to question the validity of the Order or of any provision contained therein on the grounds that it is not within the relevant powers of the Road Traffic Regulation Act 1984 or that any of the relevant requirements thereof or of any relevant regulations made thereunder have not been complied with in relation to the Order may, within six weeks from the date on which the Order was made, make application for the purpose to the High Court.

Dated 18th September 2024

JONATHAN ROWING, Head of Parking (The officer appointed for this purpose) (4706017)



City of Westminster

YARMOUTH PLACE

THE CITY OF WESTMINSTER (E ZONE) (AMENDMENT NO. 7) ORDER 2024

1. NOTICE IS HEREBY GIVEN that Westminster City Council on 16th September 2024 made the above Order under sections 6, 45, 46, 49, 63 and 124 of and Part IV of Schedule 9 to the Road Traffic Regulation Act 1984, as amended.

2. The general effect of the Order will be to:

(a) formally replace the single yellow line "8.30 a.m. to 6.30 p.m., Monday to Saturday" waiting restrictions in Yarmouth Place, at the rear of No. 105 Piccadilly, with double yellow line "at any time" waiting restrictions; and



Discover more

Phase two consultation (18 September – 5 December 2024)

[Consultation booklet](#)

[Consultation newsletter](#)

[Our updated operational layout](#)

[Questionnaire](#)

[Map with grid references for feedback](#)

[Virtual exhibition](#)

[Photomontages](#)

[Section 48 notice](#)

[Preliminary Environmental Information Report \(PEIR\)](#)





Section 48 – Planning Act 2008 – Rosefield Solar Farm

Notice publicising a proposed application for a Development Consent Order

Regulation 4 Infrastructure Planning (Applications: Prescribed Forms and Procedure) Regulations 2009

Notice under Section 48 of the Planning Act is hereby given that Rosefield Energyfarm Limited (11618221) of Alexander House 1 Mandarin Road, Rainton Bridge Business Park, Houghton Le Spring, Sunderland, England, DH4 5RA (the "Applicant") proposes to make an application ("the Application") to the Secretary of State for Energy Security and Net Zero under Section 37 of the Planning Act 2008 for a Development Consent Order ('DCO'). The Applicant intends to make the Application in Q2 2025.

The Application is for the proposed Rosefield Solar Farm ("the Proposed Development") at land south of Buckingham, close to the settlements of Steeple Claydon, East Claydon, Middle Claydon, Botolph Claydon and Calvert ("the Site") within the administrative boundary of Buckinghamshire Council. The Rosefield Solar Farm would cover an area of approximately 771 hectares.

The DCO would authorise:

- construction, operation (including maintenance) and decommissioning of ground mounted solar PV arrays, Balance of Solar System, Collector Compounds and Battery Energy Storage System, along with distribution cables.
- other association and ancillary works including a new substation, known as Rosefield Substation, which would be connected to the PV arrays and battery storage via distribution cables. Underground cabling would connect to the Rosefield Substation to the point of connection into the National Electricity Transmission System via a 400kV grid connection cable route.
- other infrastructure works including on-site cabling, ancillary buildings such as offices and welfare areas, access tracks, and any other works identified as necessary to enable the Proposed Development. There would also be parts of the Site used for landscaping which would include features such as biodiversity mitigation and enhancement measures, amenity improvements and fencing.
- The compulsory acquisition of land and/or rights and the taking of temporary possession of land.
- Offsite highway works (if required).
- The overriding of easements and other rights over or affecting land.
- The application and/or disapplication of legislation relating to the Proposed Development.
- Such ancillary, incidental and consequential provisions, licences, property rights, permits and consents as are necessary and and/or convenient.

**Appendix C-4 –
Community Update
newsletter
(published 20 May
2025)**



Community Update

May 2025

Thank you for taking the time to read our community newsletter for Rosefield Solar Farm. In this update we set out how we have refined the proposed layout of Rosefield based on feedback we received during the latest consultation. We also highlight the key next steps for the project as we prepare to submit a Development Consent Order (DCO) application in Summer/Autumn 2025.

Project update:

Between 18 September - 5 December 2024, we held a second consultation on our proposals for Rosefield. This invited comments on our operational layout which had been refined since our first consultation. We also shared the results of our early environmental assessments in a Preliminary Environmental Information Report ('PEIR').

Following the consultation, we read and reviewed all of the feedback that we received. We also continued to engage with key stakeholders and carry out additional environmental surveys. This included further ecology surveys, residential visual amenity assessments and archaeological trial trenching.

186

emails, letters
and questionnaires



239

attendees at our
in-person events



We are very grateful for all the feedback we have received to date from all stakeholders and the local community across the two phases of consultation, which has fed into our refined proposals detailed overleaf.

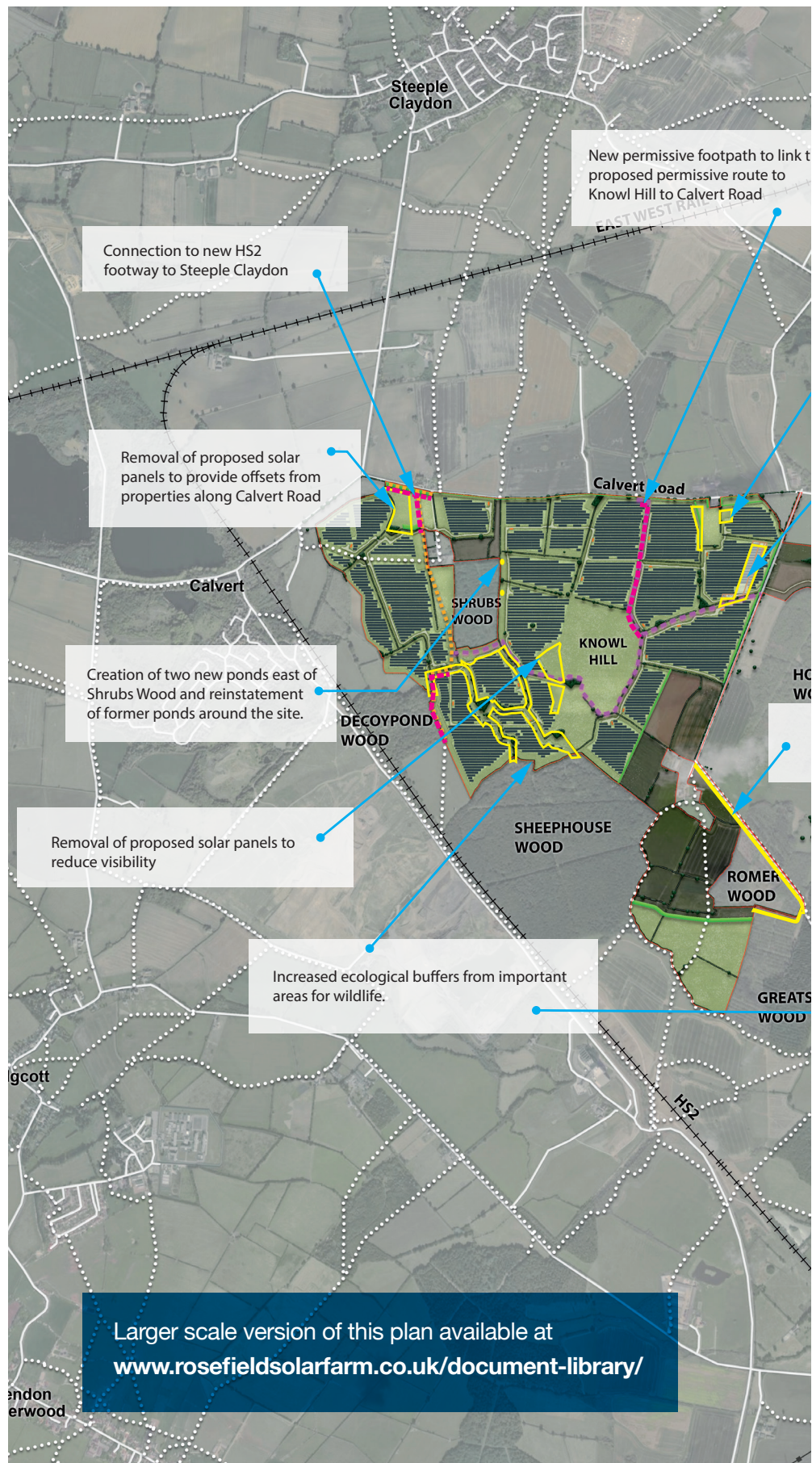
Our operational layout

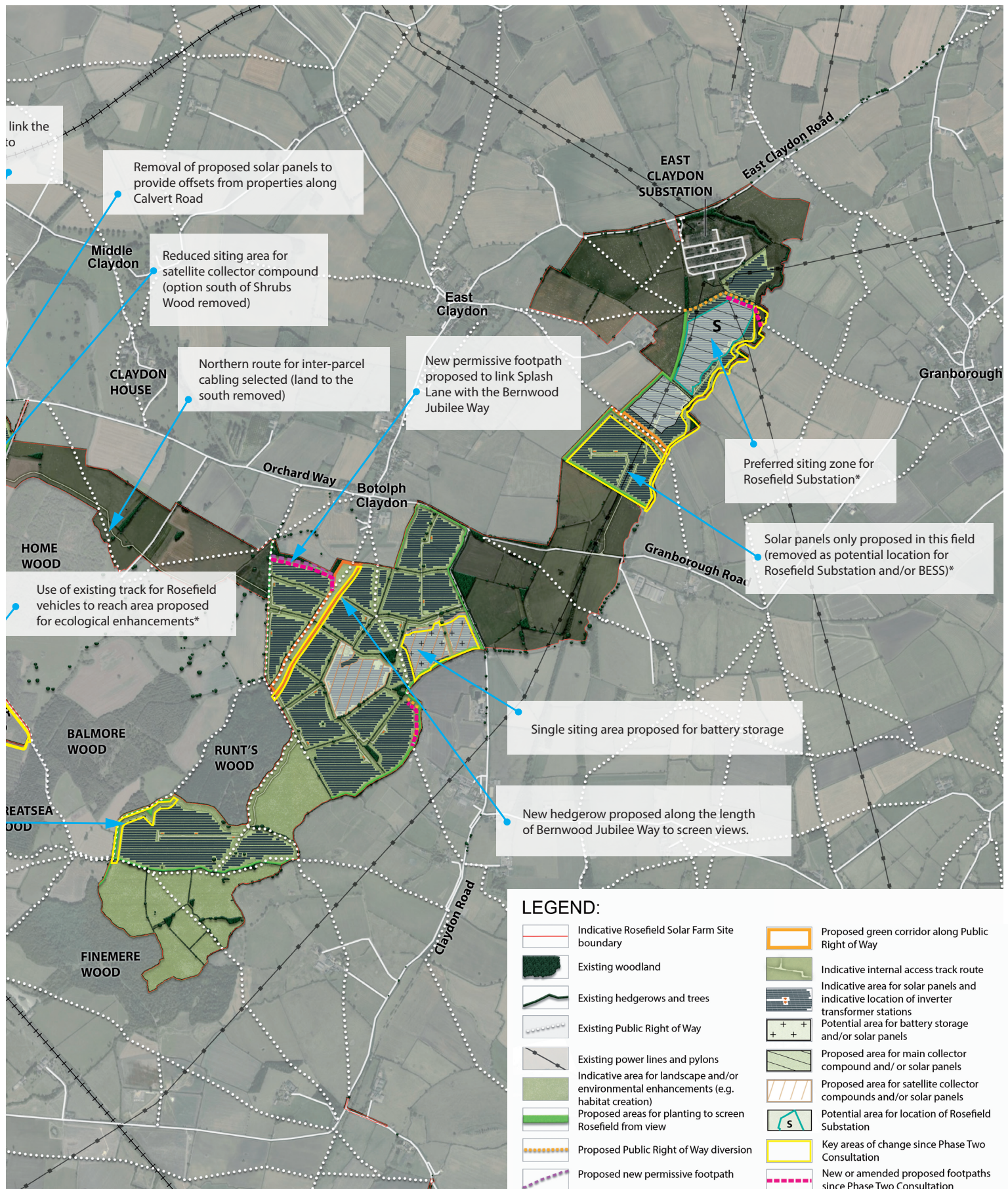
Our early design presented in September 2023 showed most of the site as potentially suitable for development, aside from areas with known planning constraints.

After feedback from the first consultation, we reduced our site boundary by 14% (2,209 to 1,906 acres), and the proposed area for solar panels by 40% (1,108 to 689 acres). This included providing larger offsets from Botolph Claydon village and areas important to ecology. We also proposed a new 1.9km walking route to open access to Knowl Hill. This was presented as part of our second consultation at the end of last year.

Feedback received during the second consultation has allowed us to further reduce our site boundary by 11% (1,906 to 1,689 acres). As well as creating bespoke offsets from properties and woodlands, we have also refined the potential locations of elements like the battery storage and Rosefield Substation. This is the layout (right) will form the basis of our DCO application.

We are continuing to engage with relevant stakeholders as we finalise our plans, including consulting with relevant statutory consultees such as your parish and local councils on some of these changes (marked *). No further significant environmental effects are anticipated as a result of the changes made.





Next steps



Submission and
acceptance window
for examination
Summer/Autumn 2025

Once we submit the Application, the Planning Inspectorate has 28 days to determine whether the application meets the required standard for examination. If accepted, all the application documents will be published on the Planning Inspectorate website.



Pre-examination
Autumn 2025

Within this three-month period, the Planning Inspectorate will appoint an 'Examining Authority' to examine the application. Individuals and groups can register to be an 'Interested Party' during this period, which means you will be given further opportunities to put forward your views.



Examination
Winter 2025 -
Summer 2026

During this six month stage, interested parties can submit their views in writing and may also be invited to speak at public hearings, which take place in local venues.



Recommendation
Autumn 2026

The Examining Authority has up to three months to make a recommendation for approval or refusal to the Secretary of State.



Decision
Winter 2026

The Secretary of State will usually take three months to review the recommendation and make a final decision.

Contact us

Should the application be accepted, we will be back in touch to share information about how you can read the application and register as an Interested Party. In the meantime, you can get in touch using our details below:



info@rosefieldsolarfarm.co.uk



rosefieldsolarfarm.co.uk



080 0861 1097



Rosefield Solar Farm FREEPOST
SEC Newgate UK Local (no stamp required)

Appendix C-5 - List of prescribed consultees consulted under section 42(1)(a) and (b) during targeted consultations



Table of Contents

Appendix C-5.1 - List of prescribed consultees under section 42(1)(a) and (b) during targeted consultation on the proposed additional land

Appendix C-5.2 - List of prescribed consultees under section 42(1)(a) and (b) during targeted consultation on the proposed layout changes

**Appendix C-5.1 -
List of prescribed
consultees
consulted under
section 42(1)(a) and
(b) during targeted
consultation on the
proposed additional
land**



Appendix C-5.1 List of prescribed consultees consulted under section 42(1)(a) and (b) during targeted consultation on the proposed additional land

Table C-1: List of prescribed consultees consulted under section 42 (1)(a) and (b) of the PA 2008

Organisation	Main consultees
Government	
The relevant parish council	
Middle Claydon Parish Council	The Clerk
East Claydon Parish Council	The Clerk
Steeple Claydon Parish Council	The Clerk
Quainton Parish Council	The Clerk
Hogshaw Parish Council	The Clerk
Winslow Town Council	The Clerk
Calvert Green Parish Council	The Clerk
Granborough Parish Council	The Clerk
Environment	
Natural England	Chief Executive Officer and Senior Officer – NSIPs
Local authorities	
Host authorities	
Buckinghamshire Council	Chief Executive Officer Major Development Manager Principal Planner

**Appendix C-5.2 -
List of prescribed
consultees
consulted under
section 42(1)(a) and
(b) during targeted
consultation on the
proposed layout
changes**



Appendix C-5.2 List of prescribed consultees consulted under section 42(1)(a) and (b) during targeted consultation on the proposed layout changes

Table C-2: List of prescribed consultees under section 42 (1)(a) and (b) of the PA 2008

Main consultees	
Government	
The relevant parish council	
Middle Claydon Parish Council	The Clerk
East Claydon Parish Council	The Clerk
Steeple Claydon Parish Council	The Clerk
Quinton Parish Council	The Clerk
Hogshaw Parish Council	The Clerk
Winslow Town Council	The Clerk
Calvert Green Parish Council	The Clerk
Granborough Parish Council	The Clerk
Environment	
Environment Agency	Chief Executive Officer
Natural England	Chief Executive Officer and Senior Officer – NSIPs
The relevant Internal Drainage Board	
Buckingham & River Ouzel Internal Drainage Board	Board Chair
Transport	
Network Rail	Chief Executive Officer
Health	
Health and Safety Executive	Chief Executive Officer

United Kingdom Health Security Agency	Chief Executive Officer (via NSIP Admin team)
--	---

Other

The relevant fire and rescue authority

Bucks Fire and Rescue Services	Chief Fire Officer
--------------------------------	--------------------

Relevant statutory undertakers

National Grid Electricity Transmission Plc	Chief Executive Officer and Development Liaison Officer
--	---

National Grid Electricity Distribution Limited	The Secretary
--	---------------

Local authorities

Host authorities

Buckinghamshire Council	Chief Executive Officer Major Development Manager Principal Planner
-------------------------	---



rosefieldsolarfarm.co.uk